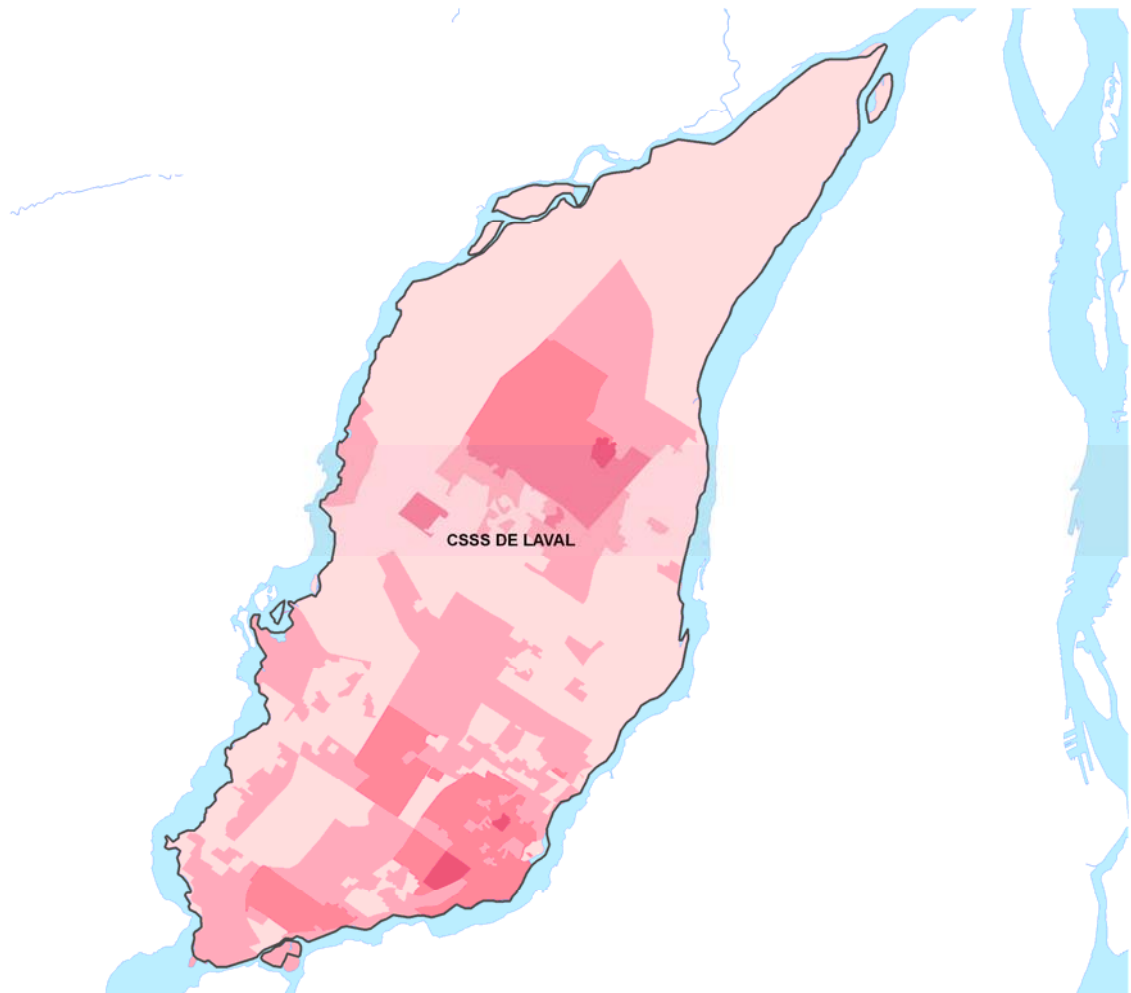


**Community Health and Social Services Network (CHSSN)
Réseau Communautaire de Santé et de Services Sociaux (RCSSS)**

***Demographic and Social Characteristics of the
English-speaking Population in the
Laval Health Region (HR-13)***



***Collection of tables and maps
September 2006***

CHSSN

**Community Health
And Social Services Network
Réseau communautaire de santé
et de services sociaux**

This document provides data on the demographic and social characteristics of the English-speaking population in the Laval Health Region. The data was compiled in order to help the Agency, public institutions, and community organizations improve access to English health and social services for English-speaking people. The document is a development initiative of the CHSSN and part of the Health and Social Services Networking and Partnership Initiative (HSSNPI), a Health Canada program managed by the Quebec Community Groups Network (QCGN).

The model for this document was prepared as part of a project funded by the Primary Health Care Transition Fund (PHCTF) for adapting services in English. The project was carried out by the Jeffrey Hale Hospital and Saint Brigid's Home Inc. in 2005-2006; they were the project promoters for the Capitale-Nationale region.

This document was produced by Jan Warnke, and the maps by Laura-Lee Bolger from J W COMM Inc. We would like to thank Luc Ricard (RESO Inc.) and Brenda Edwards, who collaborated on the formatting and writing of the reference model.

20070527 Version

Note: We have made every effort to present the tables in this report in exact accordance with Statistics Canada data. Should you come across an error while referring to these tables, please inform us as soon as possible at the following Web address:
jjohnson@chssn.org.

The maps in this document are in colour. Contrast may be lost when printed or copied in black and white. To access an electronic PDF copy, contact Jennifer Johnson at (418) 684-2289 or jjohnson@chssn.org or go to the CHSSN website (<http://www.chssn.org/scripts/Board/ShowEvent.asp?NewsID=104>).

Introduction

This document contains information on the social and demographic characteristics of the English-speaking population in the Laval Health Region (HR-13).

It is a descriptive rather than an analytical tool, consisting of tables and maps particularly addressed to managers and professionals who need information in order to plan, organize and evaluate health and social services in the Laval region.

The data at the bottom of the tables and maps was provided by the Community Health and Social Services Network (CHSSN); they were taken from the 2001 Census of Canada.

Information in the tables is organized by province, Health Region (HR), and health and social services centre (CSSS) territory. Data by previous CLSC territory is available by Web interface upon special request.

There are two sections to this document:

The first section provides demographic data on the English-speaking population according to age and answers the question "How many English-speaking people are there in the Laval Health Region?" In the case of the Laval region, the data by first official language is the most accurate for estimating the number of English-speaking people in the entire region. It is possible that in sub-regions (CSSS), mother tongue could be the best linguistic indicator, rather than first official language spoken (see Appendix 2). Moreover, data by mother tongue is included to facilitate comparative analysis. Explanations and the limits of this option can be found at the beginning of the first section.

The second section provides demographic data on the English-speaking population according to income and household living arrangements (social and economic data). In this case, data based on first official language spoken (FOLS) should be used. Explanations and the limits of this option can be found at the beginning of the second section.

In order to present a complete picture of the English-speaking population, in addition to tables of *minority-majority indexes* that compare the proportion of English-speaking people to the proportion of French-speaking people thereby distinguishing similarities or differences, summary tables are included that indicate the number of English-speaking people within the total regional population (French-speaking and English-speaking).

General explanations are given at the bottom of each table, which facilitates reading and comprehension, particularly when the reader has access to the table without the complete document.

In preparing this document, we have chosen to present a number of more general tables. Obviously, many other combinations of variables might have been used, such as specific age categories, separate tables for men and women, comparable tables from the French-speaking population, etc. However, we are currently working on a project that will allow the database to be accessed on the Internet, which will eventually facilitate a personalized downloading of tables and maps from a complete menu of variables.

Contents of the report

Part 1: DEMOGRAPHIC DATA – LANGUAGE AND AGE STRUCTURE		p. 5
<i>Each series of tables is based on the following geographic units: Province, Region, and CSSS</i>		
<u>1.1 Region, province and CSSS by mother tongue (MT) and age</u>		p. 8
<ul style="list-style-type: none"> (1) Total population (2) Percentage of English-speaking population (3) Percentage of total population (4) Provincial relative geographic index (5) Regional relative geographic index (6) Minority-majority index 		
<u>1.2 Region, province and CSSS by first official language spoken (FOLS) and age</u>		p. 15
<ul style="list-style-type: none"> (1) Total population (2) Percentage of English-speaking population (3) Percentage of total population (4) Provincial relative geographic index (5) Regional relative geographic index (6) Minority-majority index 		
<u>1.3 Maps of English-speaking population concentration in the Laval Health Region (HR) and its CSSS according to mother tongue (100%) by dissemination area (2001)</u>		p. 22
Part 2: DEMOGRAPHIC DATA – INCOME AND HOUSEHOLD LIVING ARRANGEMENTS		p. 25
<i>Each series of tables is based on the following geographic units: Province, Region, and CSSS</i>		
<u>2.1 Income</u>		p. 29
<ul style="list-style-type: none"> (1) Total population (2) Percentage of English-speaking population (3) Percentage of total population (4) Provincial relative geographic index (5) Regional relative geographic index (6) Minority-majority index 		
<u>2.2 Household living arrangements</u>		p. 36
<ul style="list-style-type: none"> (1) Total population (2) Percentage of English-speaking population (3) Percentage of total population (4) Provincial relative geographic index (5) Regional relative geographic index (6) Minority-majority index 		
<u>2.3 Living arrangements of households with an income below the low-income cut-off</u>		p. 43
<ul style="list-style-type: none"> (1) Total population (2) Percentage of English-speaking population (3) Percentage of total population (4) Provincial relative geographic index (5) Regional relative geographic index (6) Minority-majority index 		
Appendices		
Appendix 1: Definitions related to language in the 2001 Census, according to Statistics Canada		p. 50
Appendix 2: Classification of HR and CSSS in Quebec by linguistic indicator, 2001 Census		p. 56
Appendix 3: Comparison of English mother tongue population 1996-2001 by HR and CSSS		p. 61

PART 1

LANGUAGE AND AGE STRUCTURE OF THE ENGLISH-SPEAKING POPULATION IN THE LAVAL HEALTH REGION (HR 13)

Data for demographic tables on the English-speaking population in the Health Region (HR) of Laval (13) according to age group are taken from the 2001 Canada Census.

The English-speaking population in a given geographical area can be estimated by using the data based on mother tongue (MT) or based on first official language spoken (FOLS)

For the data on mother tongue:

- It is taken from a 100% sample from census forms according to the "mother tongue" definition (see Appendix 1).
- Contrary to data compiled under first official language spoken (FOLS), this data encompasses residents of institutions such as hospitals, long-term care facilities, homes for the elderly, rehabilitation centres, correctional institutions and other group residences.
- Raw data is adjusted to equally distribute multiple responses to census questions on mother tongue among the French-speaking population, English-speaking population, and others.
- It is important to note that data based on mother tongue is more conservative and has a tendency to underestimate the English-speaking population on the provincial level, compared to data using first official language spoken.
- Data based on mother tongue is, however, more reliable in areas where the English-speaking population is dispersed (particularly in low-concentration zones), which is the case for the Quebec region, though this data still tends to underestimate the number of English-speaking people.

It is possible that, for certain regions of Quebec, FOLS data is more precise for estimating the English-speaking population where it is more concentrated. Because the total number is greater at the provincial level, and there is a large concentration of English-speaking people in certain areas, the FOLS data is more accurate for estimating the English-speaking population. A detailed list of the best linguistic indicator for the English-speaking population in Quebec according to HR and CSSS can be found in Appendix 2.

Due to the definitions for mother tongue and FOLS, the true number of English-speaking people in a given area can never be lower than the mother tongue data (100% sample).

The figure based on mother tongue largely underestimates the English-speaking population at the provincial level and does not provide an accurate evaluation of the total English-speaking population in certain regions with a high concentration of English-speaking people, as in the case of Montreal where the most precise population numbers are taken from the FOLS tables.

For the Laval Health Region, the first official language spoken (FOLS) data is the most reliable estimator for the number of English-speaking people, despite the fact that these numbers may still underestimate the actual number.

Detailed explanations of the "mother tongue" variable can be found in Appendix 1. A comparison of the English mother tongue population between 1996 and 2001 by HR and CSSS is given in Appendix 3.

**Demographic and social characteristics of the English-speaking population
in the Laval Health Region (HR-13)**

Demographic tables are organized by geographic level, number, percentage of the English-speaking population, percentage of the total population, and according to three indexes:

- Provincial relative geographic index (PR_RGI) compares the proportion (percentage) of a group of English-speaking people within a smaller territory (CSSS) to the population in a larger territory (province). This index shows the geographic variation of the concentration of English-speaking people in the region in relation to the provincial average.
- Regional relative geographic index (HR_RGI) compares the proportion (percentage) of a group of English-speaking people within a smaller territory (CSSS) to the population in a larger territory (HR). This index shows the geographic variation of the concentration of English-speaking people in the region in relation to the provincial average.
- Minority-majority index (MMI) compares the proportion of English-speaking people to the proportion of French-speaking people to discern differences or similarities.

Part 1: DEMOGRAPHIC DATA – LANGUAGE AND AGE STRUCTURE	
<u>1.1 Region, province and CSSS areas by mother tongue (MT) and age</u>	p. 8
Number	p. 9
Percentage of English-speaking population	p. 10
Percentage of total population	p. 11
Provincial relative geographic index	p. 12
Regional relative geographic index	p. 13
Minority-majority index	p. 14
<u>1.2 Region, province and CSSS areas by first official language spoken (FOLS) and age</u>	p. 15
Number	p. 16
Percentage of English-speaking population	p. 17
Percentage of total population	p. 18
Provincial relative geographic index	p. 19
Regional relative geographic index	p. 20
Minority-majority index	p. 21
<u>1.3 Maps of population density of English-speaking people in the Laval health region (HR) and its CSSS area by mother tongue (100%) and by dissemination area.</u>	p. 22
1.3.1 Map of the Laval health Region by mother tongue	p. 23
1.3.2 Map of the Laval Health and Social Services Centre (CSSS) by mother tongue	p. 24

1.1 Region, province and CSSS territory by mother tongue (MT) and age

**Demographic and social characteristics of the English-speaking population
in the Laval Health Region (HR-13)**

Subject : **Total English-speaking population**
 Language : Mother tongue - English
 Sample : 100% sample
 Age groups : 19 age groups
 Sex : Total (men and women)
 Territories : **Province, Laval Health Region (HR-13) and its CSSS**

Age groups	Province of Québec	13 - Laval HR	CSSS de Laval
0-4 years	37,310	1,865	1,865
5-9 years	44,800	2,435	2,435
10-14 years	44,195	2,210	2,210
15-19 years	43,515	1,960	1,960
20-24 years	44,535	1,810	1,810
25-29 years	40,530	1,715	1,715
30-34 years	45,190	2,090	2,090
35-39 years	51,970	2,380	2,380
40-44 years	50,470	2,130	2,130
45-49 years	45,955	1,645	1,645
50-54 years	44,190	1,435	1,435
55-59 years	35,125	1,275	1,275
60-64 years	28,030	1,115	1,115
65-69 years	25,360	1,095	1,095
70-74 years	24,020	1,010	1,010
75-79 years	20,745	730	730
80-84 years	14,085	345	345
85 years and over	11,865	210	210
Total - Age groups	651,905	27,455	27,455

NOTE

The English-speaking population of a geographic location can be estimated by using data according to mother tongue or first official language spoken (FOLS).

Data by mother tongue is, however, more reliable in territories where the English-speaking population is more dispersed (low-concentration zones), although the estimates are conservative.

For other regions of Quebec, such as Laval, where the English-speaking population is more concentrated, FOLS data provides a more precise estimate. Because the total number is higher at the provincial level, and the English-speaking population is more concentrated in certain areas, FOLS data is more accurate than mother tongue data for estimating the English-speaking population. However, in all cases, data by both mother tongue and FOLS may underestimate the population.

Thus, in this table, the number for the region underestimates the actual number. The number for the province also underestimates the total English-speaking population in the province; the most accurate figure in this case is taken from the FOLS tables (see Part 1.2).

Furthermore, the tables based on FOLS present important social and economic data, cross tabulated by age groups or other characteristics of the data.

Some data is rounded off to the nearest 0 or 5 people, and certain data suppression rules are applied in order to protect individual confidentiality. Thus the total sum of a series of data may differ slightly from the sum.

Source 1: Statistics Canada, 2001 Census, special compilation for the Community Health and Social Services Network (CHSSN)

Source 2: Administrative-territorial division, Quebec Ministry of Health and Social Services

**Demographic and social characteristics of the English-speaking population
in the Laval Health Region (HR-13)**

Subject	:	English-speaking population as a percentage of the total English population
Language	:	Mother tongue - English
Sample	:	100% sample
Age groups	:	19 age groups
Sex	:	Total (men and women)
Territories	:	Province, Laval Health Region (HR-13) and its CSSS

Age groups	Province of Québec	13 - Laval HR	CSSS de Laval
0-4 years	5.7%	6.8%	6.8%
5-9 years	6.9%	8.9%	8.9%
10-14 years	6.8%	8.0%	8.0%
15-19 years	6.7%	7.1%	7.1%
20-24 years	6.8%	6.6%	6.6%
25-29 years	6.2%	6.2%	6.2%
30-34 years	6.9%	7.6%	7.6%
35-39 years	8.0%	8.7%	8.7%
40-44 years	7.7%	7.8%	7.8%
45-49 years	7.0%	6.0%	6.0%
50-54 years	6.8%	5.2%	5.2%
55-59 years	5.4%	4.6%	4.6%
60-64 years	4.3%	4.1%	4.1%
65-69 years	3.9%	4.0%	4.0%
70-74 years	3.7%	3.7%	3.7%
75-79 years	3.2%	2.7%	2.7%
80-84 years	2.2%	1.3%	1.3%
85 years and over	1.8%	0.8%	0.8%
Total - Age groups	100.0%	100.0%	100.0%

NOTE

The English-speaking population as a percentage of the total English population is used to express the weight of English-speaking people from a specific age group within their own overall linguistic population. To calculate the percentage we have divided the number of English-speaking people from one age group by the total population of English-speakers composed of all age groups.

For example, a 3.2% result for the 75-79 age group within a HR means that English-speaking people aged 75-79 represent 3.2% of the total English-speaking population in the HR. A 2.5% result for a 20-24 age group in a CSSS means that English-speaking people aged 20-24 represent 2.5% of the English-speaking population in a CSSS.

Source 1: Statistics Canada, 2001 Census, special compilation for the Community Health and Social Services Network (CHSSN)

Source 2: Administrative-territorial division, Quebec Ministry of Health and Social Services

**Demographic and social characteristics of the English-speaking population
in the Laval Health Region (HR-13)**

Subject	: English-speaking population as a percentage of the total population
Language	: Mother tongue - English
Sample	: 100% sample
Age groups	: 19 age groups
Sex	: Total (men and women)
Territories	: Province, Laval Health Region (HR-13) and its CSSS

Age groups	Province of Québec	13 - Laval HR	CSSS de Laval
0-4 years	9.9%	10.1%	10.1%
5-9 years	9.8%	10.5%	10.5%
10-14 years	9.6%	9.9%	9.9%
15-19 years	9.4%	9.3%	9.3%
20-24 years	9.1%	8.4%	8.4%
25-29 years	9.2%	8.6%	8.6%
30-34 years	9.4%	8.9%	8.9%
35-39 years	8.6%	8.0%	8.0%
40-44 years	7.9%	6.8%	6.8%
45-49 years	7.9%	6.1%	6.1%
50-54 years	8.4%	6.1%	6.1%
55-59 years	8.2%	6.3%	6.3%
60-64 years	8.5%	6.8%	6.8%
65-69 years	8.7%	7.2%	7.2%
70-74 years	9.4%	7.8%	7.8%
75-79 years	10.5%	8.2%	8.2%
80-84 years	11.7%	7.2%	7.2%
85 years and over	12.6%	5.8%	5.8%
Total - Age groups	9.0%	8.0%	8.0%

NOTE

To show the number of English-speaking people belonging to a specific age group within the total population composed of all the linguistic populations in that age group, we express the English-speaking population as a percentage of the total population. To calculate the percentage we divide the number of English-speaking people belonging to an age group by the total population composed of all the linguistic groups within the same age group.

For example, a 22% result for the 80-84 age group in a HR means that the English-speaking people aged 80-84 represent 22% of the population of people aged 80-84 in the HR. A 2.5% result for a 20-24 age group in a CSSS means that English-speaking people aged 20-24 represent 2.5% of the total population in a CSSS.

Source 1: Statistics Canada, 2001 Census, special compilation for the Community Health and Social Services Network (CHSSN)
Source 2: Administrative-territorial division, Quebec Ministry of Health and Social Services

**Demographic and social characteristics of the English-speaking population
in the Laval Health Region (HR-13)**

Subject : **Provincial relative geographic index of the English-speaking population**
 Language : Mother tongue - English
 Sample : 100% sample
 Age groups : 19 age groups
 Sex : Total (men and women)
 Territories : **Province, Laval Health Region (HR-13) and its CSSS**

Age groups	Province of Québec	13 - Laval HR	CSSS de Laval
0-4 years	1.00	1.19	1.19
5-9 years	1.00	1.29	1.29
10-14 years	1.00	1.19	1.19
15-19 years	1.00	1.07	1.07
20-24 years	1.00	0.97	0.97
25-29 years	1.00	1.00	1.00
30-34 years	1.00	1.10	1.10
35-39 years	1.00	1.09	1.09
40-44 years	1.00	1.00	1.00
45-49 years	1.00	0.85	0.85
50-54 years	1.00	<u>0.77</u>	<u>0.77</u>
55-59 years	1.00	0.86	0.86
60-64 years	1.00	0.94	0.94
65-69 years	1.00	1.03	1.03
70-74 years	1.00	1.00	1.00
75-79 years	1.00	0.84	0.84
80-84 years	1.00	<u>0.58</u>	<u>0.58</u>
85 years and over	1.00	<u>0.42</u>	<u>0.42</u>
Total - Age groups	1.00	1.00	1.00

NOTE

Provincial relative geographic index (PR_RGI) compares the proportion (percentage) of a group of English-speaking people within a smaller territory (HR or CSSS) to the population in a larger territory (province). This index shows the geographic variation of the concentration of English-speaking people in the region in relation to the provincial average.

For example, a result of **1.22** shows that by comparing the proportion of English-speaking people in the CSSS area to the proportion of English-speaking people in the province, the proportion of the English-speaking population is 22 percentage points higher in the CSSS than the proportion of English-speaking people in the province.

To emphasize differences of 20% or higher, the values of 1.20 and above are printed in bold and the values of 0.80 and less are underlined.

Source 1: Statistics Canada, 2001 Census, special compilation for the Community Health and Social Services Network (CHSSN)

Source 2: Administrative-territorial division, Quebec Ministry of Health and Social Services

**Demographic and social characteristics of the English-speaking population
in the Laval Health Region (HR-13)**

Subject : **Regional relative geographic index of the English-speaking population**
 Language : Mother tongue - English
 Sample : 100% sample
 Age groups : 19 age groups
 Sex : Total (men and women)
 Territories : **Province, Laval Health Region (HR-13) and its CSSS**

Age groups	Province of Québec	13 - Laval HR	CSSS de Laval
0-4 years		1.00	1.00
5-9 years		1.00	1.00
10-14 years		1.00	1.00
15-19 years		1.00	1.00
20-24 years		1.00	1.00
25-29 years		1.00	1.00
30-34 years		1.00	1.00
35-39 years		1.00	1.00
40-44 years		1.00	1.00
45-49 years		1.00	1.00
50-54 years		1.00	1.00
55-59 years		1.00	1.00
60-64 years		1.00	1.00
65-69 years		1.00	1.00
70-74 years		1.00	1.00
75-79 years		1.00	1.00
80-84 years		1.00	1.00
85 years and over		1.00	1.00
Total - Age groups		1.00	1.00

NOTE

Regional relative geographic index (HR_RGI) compares the proportion (percentage) of a group of English-speaking people within a smaller territory (CSSS) to the population in a larger territory (HR). This index shows the geographic variation of the concentration of English-speaking people in the region in relation to the provincial average.

For example, a result of **1.27** indicates that by comparing the proportion of English-speaking people in the CSSS area to the proportion of English-speaking people in the HR, the proportion of the English-speaking population is 27 percentage points higher in the CSSS than the proportion of English-speaking people in the entire HR.

To emphasize differences of 20% or higher, values of 1.20 and above are printed in bold and the values of 0.80 and less are underlined.

Source 1: Statistics Canada, 2001 Census, special compilation for the Community Health and Social Services Network (CHSSN)

Source 2: Administrative-territorial division, Quebec Ministry of Health and Social Services

**Demographic and social characteristics of the English-speaking population
in the Laval Health Region (HR-13)**

Subject : **Minority-majority index**
 Language : Mother tongue - English
 Sample : 100% sample
 Age groups : 19 age groups
 Sex : Total (men and women)
 Territories : **Province, Laval Health Region (HR-13) and its CSSS**

Age groups	Province of Québec	13 - Laval HR	CSSS de Laval
0-4 years	1.13	1.28	1.28
5-9 years	1.08	1.30	1.30
10-14 years	1.05	1.22	1.22
15-19 years	1.03	1.15	1.15
20-24 years	1.01	1.05	1.05
25-29 years	1.05	1.12	1.12
30-34 years	1.09	1.19	1.19
35-39 years	0.96	1.03	1.03
40-44 years	0.86	0.84	0.84
45-49 years	0.85	<u>0.75</u>	<u>0.75</u>
50-54 years	0.92	<u>0.76</u>	<u>0.76</u>
55-59 years	0.88	<u>0.77</u>	<u>0.77</u>
60-64 years	0.94	0.85	0.85
65-69 years	0.98	0.91	0.91
70-74 years	1.05	0.97	0.97
75-79 years	1.19	1.00	1.00
80-84 years	1.33	0.84	0.84
85 years and over	1.46	<u>0.67</u>	<u>0.67</u>
Total - Age groups	1.00	1.00	1.00

NOTE

Minority-majority index (MMI) compares the proportion of English-speaking people to the proportion of French-speaking people to discern differences or similarities.

For example, a result of **1.20** indicates that by comparing the proportion of English-speaking people to the proportion of French-speaking people, the proportion of the English-speaking population is 20 percentage points higher than the proportion of French-speaking people.

To emphasize differences of 20% or higher, the values of 1.20 and above are printed in bold and the values of 0.80 and less are underlined.

Source 1: Statistics Canada, 2001 Census, special compilation for the Community Health and Social Services Network (CHSSN)
 Source 2: Administrative-territorial division, Quebec Ministry of Health and Social Services

**1.2 Region, province and CSSS
by first official language spoken (FOLS) and age**

**Demographic and social characteristics of the English-speaking population
in the Laval Health Region (HR-13)**

Subject	: Total English-speaking population
Language	: First official language spoken (FOLS)
Sample	: 20% sample
Age groups	: 10 age groups
Sex	: Total (men and women)
Territories	: Province, Laval Health Region (HR-13) and its CSSS

Age groups	Province of Québec	13 - Laval HR	CSSS de Laval
0-14 years	159,215	10,320	10,320
15-24 years	121,515	6,795	6,795
25-34 years	139,580	8,670	8,675
35-44 years	160,190	10,390	10,390
45-54 years	129,360	6,815	6,815
55-64 years	87,410	4,635	4,630
65-74 years	68,225	4,045	4,045
75-84 years	42,975	1,505	1,510
85 years et plus	10,490	210	200
Total - Age groups	918,955	53,385	53,390

NOTE

The English-speaking population of a geographic location can be estimated by using data according to mother tongue or first official language spoken (FOLS).

Data by mother tongue is, however, more reliable in territories where the English-speaking population is more dispersed (low-concentration zones), although the estimates are conservative.

For other regions of Quebec, such as Montreal, where the English-speaking population is more concentrated, FOLS data provides a more precise estimate. Because the total number is higher at the provincial level, and the English-speaking population is more concentrated in certain areas, FOLS data is more accurate than mother tongue data for estimating the English-speaking population. However, in all cases, data by both mother tongue and FOLS may underestimate the population.

Thus, in this table, the number corresponding to the region is a good estimate of actual numbers. The number for the province is a much more accurate representation of the total number of English-speaking people in the province than mother tongue.

Furthermore, the tables based on FOLS present important social and economic data, cross tabulated by age groups or other characteristics of the data.

Some data is rounded off to the nearest 0 or 5 people, and certain data suppression rules are applied in order to protect individual confidentiality. Thus the total sum of a series of data may differ slightly from the sum.

Source 1: Statistics Canada, 2001 Census, special compilation for the Community Health and Social Services Network (CHSSN)

Source 2: Administrative-territorial division, Quebec Ministry of Health and Social Services

**Demographic and social characteristics of the English-speaking population
in the Laval Health Region (HR-13)**

Subject	:	English-speaking population as a percentage of the total English population
Language	:	First official language spoken (FOLS)
Sample	:	20% sample
Age groups	:	10 age groups
Sex	:	Total (men and women)
Territories	:	Province, Laval Health Region (HR-13) and its CSSS

Age groups	Province of Québec	13 - Laval HR	CSSS de Laval
0-14 years	17.3%	19.3%	19.3%
15-24 years	13.2%	12.7%	12.7%
25-34 years	15.2%	16.2%	16.2%
35-44 years	17.4%	19.5%	19.5%
45-54 years	14.1%	12.8%	12.8%
55-64 years	9.5%	8.7%	8.7%
65-74 years	7.4%	7.6%	7.6%
75-84 years	4.7%	2.8%	2.8%
85 years et plus	1.1%	0.4%	0.4%
Total - Age groups	100.0%	100.0%	100.0%

NOTE

The English-speaking population as a percentage of the total English population is used to express the weight of English-speaking people from a specific age group within their own overall linguistic population. To calculate the percentage we have divided the number of English-speaking people from one age group by the total population of English-speakers composed of all age groups.

For example, a 3.2% result for the 75-79 age group within a HR means that English-speaking people aged 75-79 represent 3.2% of the total English-speaking population in the HR. A 2.5% result for a 20-24 age group in a CSSS means that English-speaking people aged 20-24 represent 2.5% of the English-speaking population in a CSSS.

Source 1: Statistics Canada, 2001 Census, special compilation for the Community Health and Social Services Network (CHSSN)

Source 2: Administrative-territorial division, Quebec Ministry of Health and Social Services

**Demographic and social characteristics of the English-speaking population
in the Laval Health Region (HR-13)**

Subject	:	English-speaking population as a percentage of the total population
Language	:	First official language spoken (FOLS)
Sample	:	20% sample
Age groups	:	10 age groups
Sex	:	Total (men and women)
Territories	:	Province, Laval Health Region (HR-13) and its CSSS

Age groups	Province of Québec	13 - Laval HR	CSSS de Laval
0-14 years	2.2%	3.0%	3.0%
15-24 years	1.7%	2.0%	2.0%
25-34 years	2.0%	2.6%	2.6%
35-44 years	2.2%	3.1%	3.1%
45-54 years	1.8%	2.0%	2.0%
55-64 years	1.2%	1.4%	1.4%
65-74 years	1.0%	1.2%	1.2%
75-84 years	0.6%	0.4%	0.4%
85 years et plus	0.1%	0.1%	0.1%
Total - Age groups	12.9%	15.7%	15.7%

NOTE

To show the number of English-speaking people belonging to a specific age group within the total population composed of all the linguistic populations in that age group, we express the English-speaking population as a percentage of the total population. To calculate the percentage we divide the number of English-speaking people belonging to an age group by the total population composed of all the linguistic groups within the same age group.

For example, a 22% result for the 80-84 age group in a HR means that the English-speaking people aged 80-84 represent 22% of the population of people aged 80-84 in the HR. A 2.5% result for a 20-24 age group in a CSSS means that English-speaking people aged 20-24 represent 2.5% of the total population in a CSSS.

Source 1: Statistics Canada, 2001 Census, special compilation for the Community Health and Social Services Network (CHSSN)

Source 2: Administrative-territorial division, Quebec Ministry of Health and Social Services

**Demographic and social characteristics of the English-speaking population
in the Laval Health Region (HR-13)**

Subject : **Provincial relative geographic index of the English-speaking population**
 Language : First official language spoken (FOLS)
 Sample : 20% sample
 Age groups : 10 age groups
 Sex : Total (men and women)
 Territories : **Province, Laval Health Region (HR-13) and its CSSS**

Age groups	Province of Québec	13 - Laval HR	CSSS de Laval
0-14 years	1.00	1.12	1.12
15-24 years	1.00	0.96	0.96
25-34 years	1.00	1.07	1.07
35-44 years	1.00	1.12	1.12
45-54 years	1.00	0.91	0.91
55-64 years	1.00	0.91	0.91
65-74 years	1.00	1.02	1.02
75-84 years	1.00	<u>0.60</u>	<u>0.60</u>
85 years et plus	1.00	<u>0.34</u>	<u>0.33</u>
Total - Age groups	1.00	1.00	1.00

NOTE

Provincial relative geographic index (PR_RGI) compares the proportion (percentage) of a group of English-speaking people within a smaller territory (HR or CSSS) to the population in a larger territory (province). This index shows the geographic variation of the concentration of English-speaking people in the region in relation to the provincial average.

For example, a result of **1.22** shows that by comparing the proportion of English-speaking people in the CSSS area to the proportion of English-speaking people in the province, the proportion of the English-speaking population is 22 percentage points higher in the CSSS than the proportion of English-speaking people in the province.

To emphasize differences of 20% or higher, the values of 1.20 and above are printed in bold and the values of 0.80 and less are underlined.

Source 1: Statistics Canada, 2001 Census, special compilation for the Community Health and Social Services Network (CHSSN)

Source 2: Administrative-territorial division, Quebec Ministry of Health and Social Services

**Demographic and social characteristics of the English-speaking population
in the Laval Health Region (HR-13)**

Subject : **Regional relative geographic index of the English-speaking population**
 Language : First official language spoken (FOLS)
 Sample : 20% sample
 Age groups : 10 age groups
 Sex : Total (men and women)
 Territories : **Province, Laval Health Region (HR-13) and its CSSS**

Age groups	Province of Québec	13 - Laval HR	CSSS de Laval
0-14 years		1.00	1.00
15-24 years		1.00	1.00
25-34 years		1.00	1.00
35-44 years		1.00	1.00
45-54 years		1.00	1.00
55-64 years		1.00	1.00
65-74 years		1.00	1.00
75-84 years		1.00	1.00
85 years et plus		1.00	0.95
Total - Age groups		1.00	1.00

NOTE

Regional relative geographic index (HR_RGI) compares the proportion (percentage) of a group of English-speaking people within a smaller territory (CSSS) to the population in a larger territory (HR). This index shows the geographic variation of the concentration of English-speaking people in the region in relation to the provincial average.

For example, a result of **1.27** indicates that by comparing the proportion of English-speaking people in the CSSS area to the proportion of English-speaking people in the HR, the proportion of the English-speaking population is 27 percentage points higher in the CSSS than the proportion of English-speaking people in the entire HR.

To emphasize differences of 20% or higher, values of 1.20 and above are printed in bold and the values of 0.80 and less are underlined.

Source 1: Statistics Canada, 2001 Census, special compilation for the Community Health and Social Services Network (CHSSN)

Source 2: Administrative-territorial division, Quebec Ministry of Health and Social Services

**Demographic and social characteristics of the English-speaking population
in the Laval Health Region (HR-13)**

Subject : **Minority-majority index**
 Language : First official language spoken (FOLS)
 Sample : 20% sample
 Age groups : 10 age groups
 Sex : Total (men and women)
 Territories : **Province, Laval Health Region (HR-13) and its CSSS**

Age groups	Province of Québec	13 - Laval HR	CSSS de Laval
0-14 years	0.95	1.03	1.03
15-24 years	0.99	1.01	1.01
25-34 years	1.21	1.33	1.34
35-44 years	1.00	1.10	1.10
45-54 years	0.89	0.84	0.84
55-64 years	0.89	<u>0.79</u>	<u>0.79</u>
65-74 years	1.00	0.94	0.94
75-84 years	1.22	<u>0.74</u>	<u>0.75</u>
85 years et plus	1.56	<u>0.51</u>	<u>0.48</u>
Total - Age groups	1.00	1.00	1.00

NOTE

Minority-majority index (MMI) compares the proportion of English-speaking people to the proportion of French-speaking people to discern differences or similarities.

For example, a result of **1.20** indicates that by comparing the proportion of English-speaking people to the proportion of French-speaking people, the proportion of the English-speaking population is 20 percentage points higher than the proportion of French-speaking people.

To emphasize differences of 20% or higher, the values of 1.20 and above are printed in bold and the values of 0.80 and less are underlined.

Source 1: Statistics Canada, 2001 Census, special compilation for the Community Health and Social Services Network (CHSSN)
 Source 2: Administrative-territorial division, Quebec Ministry of Health and Social Services

1.3 Maps

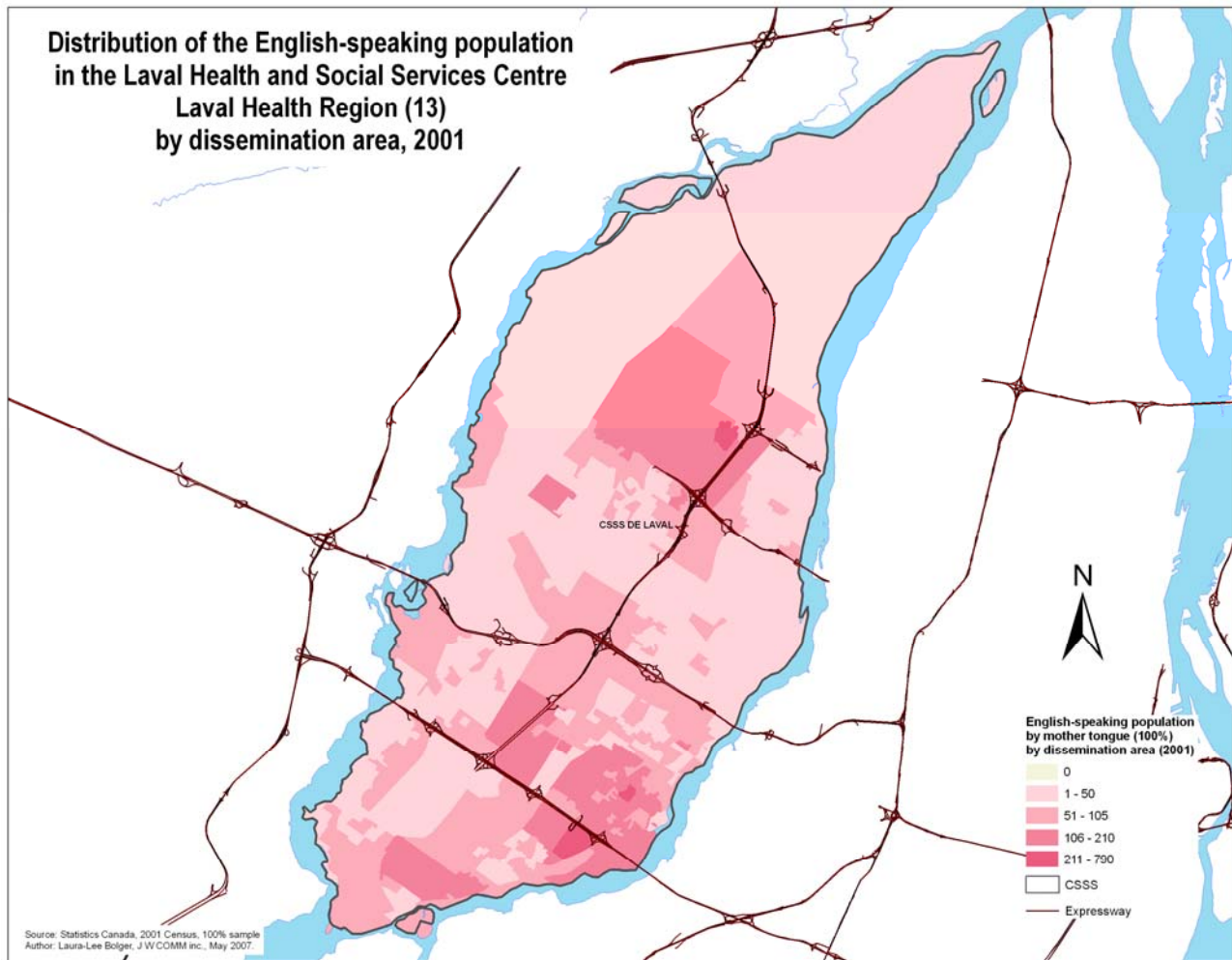
Laval Health Region (HR-13) and its CSSS

Concentration of English-speaking population by mother tongue (100%) by dissemination area (2001)

Remarks

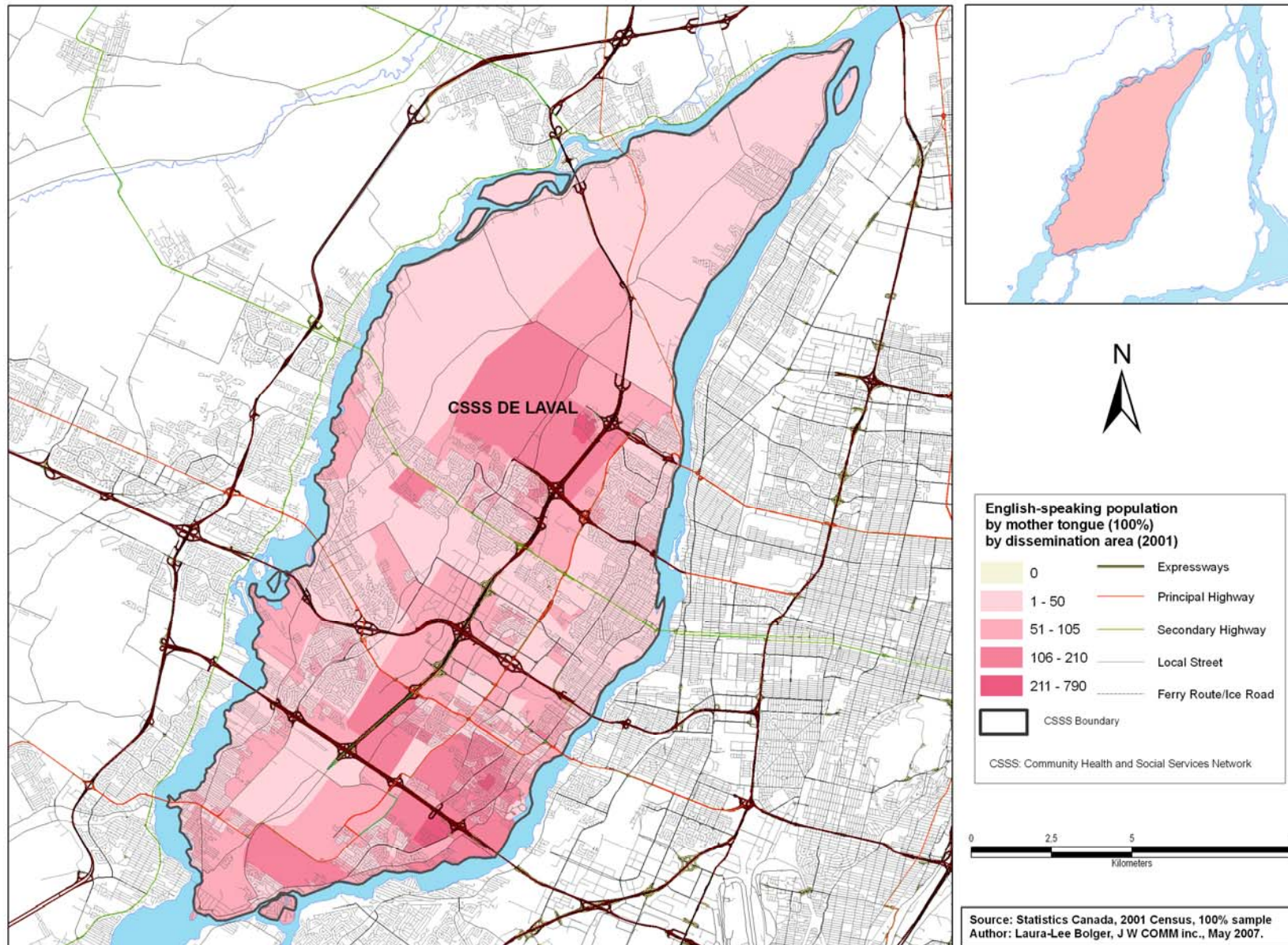
The maps in this section show the distribution (concentration) of the English mother tongue population for the Laval region adjusted for multiple responses. The numbers in the legend indicate the average number of English-speaking people by dissemination area (a dissemination area includes between 400 and 700 people). The darker shaded areas have a concentration of 211 English-speaking people or more, by dissemination area.

The maps on the Web site by CSSS territory are more precise.



This map and those that follow show the distribution (concentration) of the English mother tongue population for the Laval region adjusted for multiple responses. The numbers in the legend indicate the average number of English-speaking people by dissemination area (a dissemination area includes between 400 and 700 people). The darker shaded areas have a concentration of 211 English-speaking people or more, by dissemination area.

Distribution of the English-speaking population in the Laval Health and Social Services Centre (CSSS), Laval Health Region (13) by dissemination area, 2001



PART 2

INCOME AND HOUSEHOLD LIVING ARRANGEMENTS OF THE ENGLISH-SPEAKING POPULATION IN THE LAVAL HEALTH REGION (HR 13)

The tables on the social and economic characteristics of the English-speaking population are taken from the 2001 Canada Census.

This data is compiled solely by first official language spoken (FOLS) from a 20% sample of the census questionnaires.

There are no specific questions about FOLS in the census. This data is compiled/inferred from responses to three questions in the 2001 Census, namely: (1) knowledge of official languages, (2) mother tongue, and (3) language spoken at home. This procedure allows the population to be classified according to two categories: English and French. These three definitions can be found in Appendix 1.

FOLS data includes persons whose first official language spoken is English but whose mother tongue is not English. Contrary to data by mother tongue only, this data does not include residents of institutions such as hospitals, long-term care facilities, homes for the elderly, rehabilitation centres, correctional institutions or other group residences.

Since the following tables are based on FOLS, it is possible that in some of them (where individuals are counted) the total English-speaking population does not correspond to the total English-speaking population found in the first section, where demographic data is based on language and age structure. As explained in Part 1, **FOLS data is more accurate for estimating the total population in the province** because the total number is larger and, overall, there are high concentrations of English-speaking people in certain areas. **However, mother tongue data** (100% sample) **is more accurate in areas where the English-speaking population is dispersed (low-concentration zones), which is the case for the Capitale-Nationale region, though this data still underestimates the number of English-speaking people. The best indicator for the English-speaking population in the Laval Health Region is first official language spoken (FOLS).** Appendix 2 includes a detailed list of the best linguistic indicator for the English-speaking population by HR and CSSS in Quebec.

However, the following tables based on FOLS are a good indicator of social and economic characteristics, as well as proportion/distribution across age groups, where applicable.

Note: Some data is rounded off to the nearest 0 or 5 people, and certain data suppression rules are applied in order to protect individual confidentiality. Thus the total sum of a series of data may differ slightly from the sum.

The following tables are structured around the following parameters:

↳ Geographic base

- All tables are based on the following: Province/Region/CSSS

↳ Social and economic characteristics

- Income
- Household living arrangements (family structure)
- Living arrangements of households (family structure) with an income less than the low income cut-off.

↳ Types of data

- Number
- Percentage of the linguistic population
- Percentage of the total population
- Provincial relative geographic index (PR_RGI)
 - compares the proportion (percentage) of a group of English-speaking people within a smaller territory (CSSS) to the population in a larger territory (province). This index shows the geographic variation of the concentration of English-speaking people in the region in relation to the provincial average.
- Regional relative geographic index (HR_RGI)
 - compares the proportion (percentage) of a group of English-speaking people within a smaller territory (CSSS) to the population in a larger territory (HR). This index shows the geographic variation of the concentration of English-speaking people in the region in relation to the provincial average.
- Minority-majority index (MMI)
 - compares the proportion of English-speaking people to the proportion of French-speaking people to discern differences or similarities.

Part 2: SOCIAL AND ECONOMIC DATA

<u>2.1 Income</u>	p. 29
Number	p. 30
Percentage of the English-speaking population	p. 31
Percentage of the total population	p. 32
Provincial relative geographic index	p. 33
Regional relative geographic index	p. 34
Minority-majority index	p. 35
<u>2.2 Household living arrangements (family structure)</u>	p. 36
Number	p. 37
Percentage of the English-speaking population	p. 38
Percentage of the total population	p. 39
Provincial relative geographic index	p. 40
Regional relative geographic index	p. 41
Minority-majority index	p. 42
<u>2.3 Living arrangements of households with income below the low-income cutoff</u>	p. 43
Number	p. 44
Percentage of the English-speaking population	p. 45
Percentage of the total population	p. 46
Provincial relative geographic index	p. 47
Regional relative geographic index	p. 48
Minority-majority index	p. 49

2.1 A few social and economic characteristics

➤ Income

Income data refers to the income of economic families (groups of two or more people living in the same home who are related by blood, common law marriage or adoption).

Tables by income show **individuals** within economic families, according to the income of these economic families.

The following data categories are cross-tabulated according to 10 age groups, sex and language. However, the following tables were compiled only for the total of age groups, including the total of both sexes.

The tables contain the following categories:

- Total – Income levels
- Without income
- With income
 - Under \$10 000
 - \$10 000 - \$19 999
 - \$20 000 - \$29 999
 - \$30 000 - \$39 999
 - \$40 000 - \$49 999
 - \$50 000 - \$59 999
 - \$60 000 - \$74 999
 - \$75 000 and over
- Less than the low income cut-off
- At or above low income cut-off
- LICO - not applicable
- Average income \$

Note: Average income \$ has not been compiled for CSSS or linguistic groups which were adjusted for the multiple responses to census questions.

**Demographic and social characteristics of the English-speaking population
in the Laval Health Region (HR13)**

Subject	:	Total English-speaking population by economic family income
Language	:	First official language spoken (FOLS)
Sample	:	20% sample
Age groups	:	Total of age groups
Sex	:	Total (men and women)
Territories	:	Province, Laval Health Region (HR-13) and its CSSS

Income	Province of Québec	13 - Laval HR	CSSS de Laval
Without income	205,350	12,775	12,780
With income	713,605	40,610	40,615
Under \$10 000	185,245	10,030	10,035
\$10 000 - \$19 999	164,945	9,030	9,030
\$20 000 - \$29 999	115,125	7,430	7,425
\$30 000 - \$39 999	85,755	5,800	5,800
\$40 000 - \$49 999	52,720	3,185	3,185
\$50 000 - \$59 999	35,520	1,920	1,925
\$60 000 - \$74 999	31,530	1,610	1,610
\$75 000 and over	42,760	1,610	1,600
Below low income cut-off	209,775	10,145	10,145
At or above low income cut-off	692,945	43,205	43,210
LICO - Not applicable	16,240	40	40
Total - Income levels	918,955	53,385	53,390

NOTE

The English-speaking population of a geographic location can be estimated by using data according to mother tongue or first official language spoken (FOLS).

Data by mother tongue is, however, more reliable in territories where the English-speaking population is more dispersed (low-concentration zones), although the estimates are conservative.

For other regions of Quebec, such as Montreal, where the English-speaking population is more concentrated, FOLS data provides a more precise estimate. Because the total number is higher at the provincial level, and the English-speaking population is more concentrated in certain areas, FOLS data is more accurate than mother tongue data for estimating the English-speaking population. However, in all cases, data by both mother tongue and FOLS may underestimate the population.

Thus, in this table, the number corresponding to the region is a good estimate of actual numbers. The number for the province is a much more accurate representation of the total number of English-speaking people in the province than mother tongue.

Furthermore, the tables based on FOLS present important social and economic data, cross tabulated by age groups or other characteristics of the data.

Some data is rounded off to the nearest 0 or 5 people, and certain data suppression rules are applied in order to protect individual confidentiality. Thus the total sum of a series of data may differ slightly from the sum.

Source 1: Statistics Canada, 2001 Census, special compilation for the Community Health and Social Services Network (CHSSN)

Source 2: Administrative-territorial division, Quebec Ministry of Health and Social Services

**Demographic and social characteristics of the English-speaking population
in the Laval Health Region (HR13)**

Subject	:	English-speaking population as a percentage of the total English population by economic family income
Language	:	First official language spoken (FOLS)
Sample	:	20% sample
Age groups	:	Total of age groups
Sex	:	Total (men and women)
Territories	:	Province, Laval Health Region (HR-13) and its CSSS

Income	Province of Québec	13 - Laval HR	CSSS de Laval
Without income	22.3%	23.9%	23.9%
With income	77.7%	76.1%	76.1%
Under \$10 000	20.2%	18.8%	18.8%
\$10 000 - \$19 999	17.9%	16.9%	16.9%
\$20 000 - \$29 999	12.5%	13.9%	13.9%
\$30 000 - \$39 999	9.3%	10.9%	10.9%
\$40 000 - \$49 999	5.7%	6.0%	6.0%
\$50 000 - \$59 999	3.9%	3.6%	3.6%
\$60 000 - \$74 999	3.4%	3.0%	3.0%
\$75 000 and over	4.7%	3.0%	3.0%
Below low income cut-off	22.8%	19.0%	19.0%
At or above low income cut-off	75.4%	80.9%	80.9%
LICO - Not applicable	1.8%	0.1%	0.1%
Total - Income levels	100.0%	100.0%	100.0%

NOTE

The English-speaking population as a percentage of the total English population is used to express the weight of English-speaking people from a specific income level within their own overall linguistic population. To calculate the percentage we have divided the number of English-speaking people from one income level by the total population of English-speakers.

For example, a 3.2% result for the "\$40 000 - \$49 999" income level within a HR means that English-speaking people living in families who earn between "\$40 000 - \$49 999" represent 3.2% of the total English-speaking population in the HR. A 2.5% result for a "\$75 000 and over" income level in a CSSS means that English-speaking people earning "\$75 000 and over" represent 2.5% of the English-speaking population in a CSSS.

Source 1: Statistics Canada, 2001 Census, special compilation for the Community Health and Social Services Network (CHSSN)

Source 2: Administrative-territorial division, Quebec Ministry of Health and Social Services

**Demographic and social characteristics of the English-speaking population
in the Laval Health Region (HR13)**

Subject	:	English-speaking population as a percentage of the total population by economic family income
Language	:	First official language spoken (FOLS)
Sample	:	20% sample
Age groups	:	Total of age groups
Sex	:	Total (men and women)
Territories	:	Province, Laval Health Region (HR-13) and its CSSS

Income	Province of Québec	13 - Laval HR	CSSS de Laval
Without income	12.7%	16.4%	16.4%
With income	13.0%	15.5%	15.5%
Under \$10 000	13.7%	18.2%	18.2%
\$10 000 - \$19 999	12.6%	15.8%	15.8%
\$20 000 - \$29 999	12.4%	16.7%	16.6%
\$30 000 - \$39 999	11.8%	15.1%	15.1%
\$40 000 - \$49 999	11.5%	12.4%	12.4%
\$50 000 - \$59 999	12.2%	12.0%	12.0%
\$60 000 - \$74 999	13.5%	12.1%	12.1%
\$75 000 and over	20.4%	14.5%	14.4%
Below low income cut-off	15.6%	18.7%	18.7%
At or above low income cut-off	12.1%	15.2%	15.2%
LICO - Not applicable	24.2%	5.1%	5.2%
Total - Income levels	12.9%	15.7%	15.7%

NOTE

The English-speaking population as a percentage of the total population is used to express the weight of English-speaking people from a specific income bracket within the total population composed of all the linguistic populations in that income bracket. To calculate the percentage we have divided the number of English-speaking people from one income bracket by the total population composed of all the linguistic groups within that income bracket.

For example, a 5.2% result for the "\$40 000 - \$49 999" income bracket within a HR means that English-speaking people living in families who earn between "\$40 000 - \$49 999" represent 3.2% of the total population in the HR. A 2.5% result for a "\$75 000 and over" income bracket in a CSSS means that English-speaking people earning "\$75 000 and over" represent 2.5% of the total population in a CSSS.

Source 1: Statistics Canada, 2001 Census, special compilation for the Community Health and Social Services Network (CHSSN)

Source 2: Administrative-territorial division, Quebec Ministry of Health and Social Services

**Demographic and social characteristics of the English-speaking population
in the Laval Health Region (HR13)**

Subject : **Provincial relative geographic index of the English-speaking population
by economic family income**

Language : First official language spoken (FOLS)

Sample : 20% sample

Age groups : Total of age groups

Sex : Total (men and women)

Territories : **Province, Laval Health Region (HR-13) and its CSSS**

Income	Province of Québec	13 - Laval HR	CSSS de Laval
Without income	1.00	1.07	1.07
With income	1.00	0.98	0.98
Under \$10 000	1.00	0.93	0.93
\$10 000 - \$19 999	1.00	0.94	0.94
\$20 000 - \$29 999	1.00	1.11	1.11
\$30 000 - \$39 999	1.00	1.16	1.16
\$40 000 - \$49 999	1.00	1.04	1.04
\$50 000 - \$59 999	1.00	0.93	0.93
\$60 000 - \$74 999	1.00	0.88	0.88
\$75 000 and over	1.00	<u>0.65</u>	<u>0.64</u>
Below low income cut-off	1.00	0.83	0.83
At or above low income cut-off	1.00	1.07	1.07
LICO - Not applicable	1.00	<u>0.04</u>	<u>0.04</u>
Total - Income levels	1.00	1.00	1.00

NOTE

Provincial relative geographic index (PR_RGI) compares the proportion (percentage) of a group of English-speaking people within a smaller territory (HR or CSSS) to the population in a larger territory (province). This index shows the geographic variation of the concentration of English-speaking people in the region in relation to the provincial average.

For example, a result of **1.39** shows that by comparing the proportion of English-speaking people in the smaller territory to the proportion of English-speaking people in the province, the proportion of the English-speaking population in the smaller territory is 39 percentage points higher than the proportion of English-speaking people in the province.

To emphasize differences of 20% or higher, the values of 1.20 and above are printed in bold and the values of 0.80 and less are underlined.

Source 1: Statistics Canada, 2001 Census, special compilation for the Community Health and Social Services Network (CHSSN)

Source 2: Administrative-territorial division, Quebec Ministry of Health and Social Services

**Demographic and social characteristics of the English-speaking population
in the Laval Health Region (HR13)**

Subject : **Regional relative geographic index of the English-speaking population by economic family income**
 Language : First official language spoken (FOLS)
 Sample : 20% sample
 Age groups : Total of age groups
 Sex : Total (men and women)
 Territories : **Province, Laval Health Region (HR-13) and its CSSS**

Income	Province of Québec	13 - Laval HR	CSSS de Laval
Without income		1.00	1.00
With income		1.00	1.00
Under \$10 000		1.00	1.00
\$10 000 - \$19 999		1.00	1.00
\$20 000 - \$29 999		1.00	1.00
\$30 000 - \$39 999		1.00	1.00
\$40 000 - \$49 999		1.00	1.00
\$50 000 - \$59 999		1.00	1.00
\$60 000 - \$74 999		1.00	1.00
\$75 000 and over		1.00	0.99
Below low income cut-off		1.00	1.00
At or above low income cut-off		1.00	1.00
LICO - Not applicable		1.00	1.00
Total - Income levels		1.00	1.00

NOTE

Regional relative geographic index (HR_RGI) compares the proportion (percentage) of a group of English-speaking people within a smaller territory (CSSS) to the population in a larger territory (HR). This index shows the geographic variation of the concentration of English-speaking people in the region in relation to the provincial average.

For example, a result of **1.45** indicates that by comparing the proportion of English-speaking people in the CSSS area to the proportion of English-speaking people in the HR, the proportion of the English-speaking population in the CSSS is 45 percentage points higher than the proportion of English-speaking people in the HR.

To emphasize differences of 20% or higher, values of 1.20 and above are printed in bold and the values of 0.80 and less are underlined.

Source 1: Statistics Canada, 2001 Census, special compilation for the Community Health and Social Services Network (CHSSN)

Source 2: Administrative-territorial division, Quebec Ministry of Health and Social Services

**Demographic and social characteristics of the English-speaking population
in the Laval Health Region (HR13)**

Subject	:	Minority-majority index by economic family income
Language	:	First official language spoken (FOLS)
Sample	:	20% sample
Age groups	:	Total of age groups
Sex	:	Total (men and women)
Territories	:	Province, Laval Health Region (HR-13) and its CSSS

Income	Province of Québec	13 - Laval HR	CSSS de Laval
Without income	0.99	1.05	1.05
With income	1.00	0.98	0.98
Under \$10 000	1.08	1.20	1.20
\$10 000 - \$19 999	0.98	1.03	1.03
\$20 000 - \$29 999	0.95	1.06	1.06
\$30 000 - \$39 999	0.89	0.94	0.94
\$40 000 - \$49 999	0.87	<u>0.75</u>	<u>0.75</u>
\$50 000 - \$59 999	0.93	<u>0.72</u>	<u>0.72</u>
\$60 000 - \$74 999	1.05	<u>0.72</u>	<u>0.73</u>
\$75 000 and over	1.72	0.89	0.89
Below low income cut-off	1.26	1.25	1.25
At or above low income cut-off	0.93	0.96	0.96
LICO - Not applicable	2.31	<u>0.29</u>	<u>0.28</u>
Total - Income levels	1.00	1.00	1.00

NOTE

Minority-majority index (MMI) compares the proportion of English-speaking people to the proportion of French-speaking people to discern differences or similarities.

For example, a result of **1.20** indicates that by comparing the proportion of English-speaking people to the proportion of French-speaking people, the proportion of the English-speaking population is 20 percentage points higher than the proportion of French-speaking people.

To emphasize differences of 20% or higher, the values of 1.20 and above are printed in bold and the values of 0.80 and less are underlined.

Source 1: Statistics Canada, 2001 Census, special compilation for the Community Health and Social Services Network (CHSSN)
Source 2: Administrative-territorial division, Quebec Ministry of Health and Social Services

2.2 Social and economic characteristics

➤ Household living arrangements

Data based on household living arrangements (family structure) gives us an overview of the number of people in a family and the relationship between individuals within these families.

The following data categories are cross-tabulated according to 10 age groups, sex and language. However, the following tables were compiled only for the total of age groups, including the total of both sexes.

The tables contain the following categories:

- Household living arrangements
- Total – People in private households
- Total – People in census families
 - Married, common-law unions
 - Single-parent households
- Total – Non-family persons
 - Living with blood relatives
 - Living with non-relatives only
 - Living alone
- Total - People in multiple residences
- Total – Household living arrangements

**Demographic and social characteristics of the English-speaking population
in the Laval Health Region (HR13)**

Subject	:	Total English-speaking population by household living arrangements
Language	:	First official language spoken (FOLS)
Sample	:	20% sample
Age groups	:	Total of age groups
Sex	:	Total (men and women)
Territories	:	Province, Laval Health Region (HR-13) and its CSSS

Household living arrangements	Province of Québec	13 - Laval HR	CSSS de Laval
Total - People in private households	916,600	53,360	53,360
Total - People in census families	763,095	49,370	49,370
Married, common-law unions	655,900	45,115	45,110
Single-parent households	107,200	4,255	4,255
Total - Non-family persons	153,500	3,990	3,995
Living with blood relatives	17,605	750	745
Living with non-relatives only	26,030	510	515
Living alone	109,860	2,730	2,735
Total - People in multiple residences	2,355	25	20
Total - Household living arrangements	918,955	53,385	53,390

NOTE

The English-speaking population of a geographic location can be estimated by using data according to mother tongue or first official language spoken (FOLS).

Data by mother tongue is, however, more reliable in territories where the English-speaking population is more dispersed (low-concentration zones), although the estimates are conservative.

For other regions of Quebec, such as Montreal, where the English-speaking population is more concentrated, FOLS data provides a more precise estimate. Because the total number is higher at the provincial level, and the English-speaking population is more concentrated in certain areas, FOLS data is more accurate than mother tongue data for estimating the English-speaking population. However, in all cases, data by both mother tongue and FOLS may underestimate the population.

Thus, in this table, the number corresponding to the region is a good estimate of actual numbers. The number for the province is a more accurate representation of the total number of English-speaking people in the province; in this case, the most accurate number is taken from the FOLS table.

However, the following tables based on FOLS are a good indicator of social and economic characteristics, as well as proportion/distribution across age groups, where applicable.

Some data is rounded off to the nearest 0 or 5 people, and certain data suppression rules are applied in order to protect individual confidentiality. Thus the total sum of a series of data may differ slightly from the sum.

Source 1: Statistics Canada, 2001 Census, special compilation for the Community Health and Social Services Network (CHSSN)

Source 2: Administrative-territorial division, Quebec Ministry of Health and Social Services

**Demographic and social characteristics of the English-speaking population
in the Laval Health Region (HR13)**

Subject	:	English-speaking population as a percentage of the total English population by household living arrangements
Language	:	First official language spoken (FOLS)
Sample	:	20% sample
Age groups	:	Total of age groups
Sex	:	Total (men and women)
Territories	:	Province, Laval Health Region (HR-13) and its CSSS

Household living arrangements	Province of Québec	13 - Laval HR	CSSS de Laval
Total - People in private households	99.7%	100.0%	99.9%
Total - People in census families	83.0%	92.5%	92.5%
Married, common-law unions	71.4%	84.5%	84.5%
Single-parent households	11.7%	8.0%	8.0%
Total - Non-family persons	16.7%	7.5%	7.5%
Living with blood relatives	1.9%	1.4%	1.4%
Living with non-relatives only	2.8%	1.0%	1.0%
Living alone	12.0%	5.1%	5.1%
Total - People in multiple residences	0.3%	0.0%	0.0%
Total - Household living arrangements	100.0%	100.0%	100.0%

NOTE

The English-speaking population as a percentage of the total English population is used to express the weight of English-speaking people from a specific household living arrangement category within their own overall linguistic population. To calculate the percentage we have divided the number of English-speaking people from one household living arrangement category by the total population of English-speakers.

For example, an 11.9% result for the "Single-parent household" category in a HR means that English-speaking people living in single-parent households represent 11.9% of the total English-speaking population in the HR. A 19.4% result for the "Single-parent household" category in a CSSS means that English-speaking people living in single-parent households represent 19.4% of the English-speaking population in a CSSS.

Source 1: Statistics Canada, 2001 Census, special compilation for the Community Health and Social Services Network (CHSSN)

Source 2: Administrative-territorial division, Quebec Ministry of Health and Social Services

**Demographic and social characteristics of the English-speaking population
in the Laval Health Region (HR13)**

Subject : **English-speaking population as a percentage of the total population
by household living arrangements**
 Language : First official language spoken (FOLS)
 Sample : 20% sample
 Age groups : Total of age groups
 Sex : Total (men and women)
 Territories : **Province, Laval Health Region (HR-13) and its CSSS**

Household living arrangements	Province of Québec	13 - Laval HR	CSSS de Laval
Total - People in private households	12.9%	15.8%	15.8%
Total - People in census families	12.9%	16.8%	16.8%
Married, common-law unions	13.0%	17.6%	17.6%
Single-parent households	12.9%	11.2%	11.2%
Total - Non-family persons	12.7%	9.0%	9.0%
Living with blood relatives	15.0%	12.9%	12.8%
Living with non-relatives only	12.7%	7.4%	7.5%
Living alone	12.5%	8.6%	8.6%
Total - People in multiple residences	8.5%	4.0%	3.1%
Total - Household living arrangements	12.9%	15.7%	15.7%

NOTE

To show the weight of English-speaking people belonging to a specific household living arrangement category within the total population composed of all the linguistic populations in that category, we express the English-speaking population as a percentage of the total population. To calculate the percentage we divide the number of English-speaking people belonging to a household living arrangement category by the total population composed of all the linguistic groups within the same category.

For example, a 27.8% result for the "Single-parent household" category in a HR means that English-speaking people living in single-parent households represent 27.8% of the total population living in single-parent households in the HR. A 61.9% result for the "Single-parent household" category in a CSSS means that English-speaking people living in single-parent households represent 61.9% of the total population living in single-parent households in a CSSS.

Source 1: Statistics Canada, 2001 Census, special compilation for the Community Health and Social Services Network (CHSSN)

Source 2: Administrative-territorial division, Quebec Ministry of Health and Social Services

**Demographic and social characteristics of the English-speaking population
in the Laval Health Region (HR13)**

Subject : **Provincial relative geographic index of the English-speaking population
by household living arrangements**
 Language : First official language spoken (FOLS)
 Sample : 20% sample
 Age groups : Total of age groups
 Sex : Total (men and women)
 Territories : **Province, Laval Health Region (HR-13) and its CSSS**

Household living arrangements	Province of Québec	13 - Laval HR	CSSS de Laval
Total - People in private households	1.00	1.00	1.00
Total - People in census families	1.00	1.11	1.11
Married, common-law unions	1.00	1.18	1.18
Single-parent households	1.00	<u>0.68</u>	<u>0.68</u>
Total - Non-family persons	1.00	<u>0.45</u>	<u>0.45</u>
Living with blood relatives	1.00	<u>0.73</u>	<u>0.73</u>
Living with non-relatives only	1.00	<u>0.34</u>	<u>0.34</u>
Living alone	1.00	<u>0.43</u>	<u>0.43</u>
Total - People in multiple residences	1.00	<u>0.18</u>	<u>0.15</u>
Total - Household living arrangements	1.00	1.00	1.00

NOTE

Provincial relative geographic index (PR_RGI) compares the proportion (percentage) of a group of English-speaking people within a smaller territory (HR or CSSS) to the population in a larger territory (province). This index shows the geographic variation of the concentration of English-speaking people in the region in relation to the provincial average.

For example, a result of **1.39** shows that by comparing the proportion of English-speaking people in the CSSS area to the proportion of English-speaking people in the province, the proportion of the English-speaking population is 39 percentage points higher in the CSSS than the proportion of English-speaking people in the province.

To emphasize differences of 20% or higher, the values of 1.20 and above are printed in bold and the values of 0.80 and less are underlined.

Source 1: Statistics Canada, 2001 Census, special compilation for the Community Health and Social Services Network (CHSSN)
 Source 2: Administrative-territorial division, Quebec Ministry of Health and Social Services

**Demographic and social characteristics of the English-speaking population
in the Laval Health Region (HR13)**

Subject : **Regional relative geographic index of the English-speaking population by household living arrangements**
 Language : First official language spoken (FOLS)
 Sample : 20% sample
 Age groups : Total of age groups
 Sex : Total (men and women)
 Territories : **Province, Laval Health Region (HR-13) and its CSSS**

Household living arrangements	Province of Québec	13 - Laval HR	CSSS de Laval
Total - People in private households		1.00	1.00
Total - People in census families		1.00	1.00
Married, common-law unions		1.00	1.00
Single-parent households		1.00	1.00
Total - Non-family persons		1.00	1.00
Living with blood relatives		1.00	0.99
Living with non-relatives only		1.00	1.01
Living alone		1.00	1.00
Total - People in multiple residences		1.00	<u>0.80</u>
Total - Household living arrangements		1.00	1.00

NOTE

Regional relative geographic index (HR_RGI) compares the proportion (percentage) of a group of English-speaking people within a smaller territory (CSSS) to the population in a larger territory (HR). This index shows the geographic variation of the concentration of English-speaking people in the region in relation to the provincial average.

For example, a result of **1.45** indicates that by comparing the proportion of English-speaking people in the CSSS area to the proportion of English-speaking people in the HR, the proportion of the English-speaking population in the CSSS is 45 percentage points higher than the proportion of English-speaking people in the HR.

To emphasize differences of 20% or higher, values of 1.20 and above are printed in bold and the values of 0.80 and less are underlined.

Source 1: Statistics Canada, 2001 Census, special compilation for the Community Health and Social Services Network (CHSSN)

Source 2: Administrative-territorial division, Quebec Ministry of Health and Social Services

**Demographic and social characteristics of the English-speaking population
in the Laval Health Region (HR13)**

Subject : **Minority-majority index
by household living arrangements**
 Language : First official language spoken (FOLS)
 Sample : 20% sample
 Age groups : Total of age groups
 Sex : Total (men and women)
 Territories : **Province, Laval Health Region (HR-13) and its CSSS**

Household living arrangements	Province of Québec	13 - Laval HR	CSSS de Laval
Total - People in private households	1.00	1.00	1.00
Total - People in census families	1.00	1.08	1.08
Married, common-law unions	1.00	1.14	1.14
Single-parent households	1.00	<u>0.67</u>	<u>0.67</u>
Total - Non-family persons	0.99	<u>0.53</u>	<u>0.53</u>
Living with blood relatives	1.25	0.91	0.90
Living with non-relatives only	0.97	<u>0.43</u>	<u>0.43</u>
Living alone	0.96	<u>0.50</u>	<u>0.50</u>
Total - People in multiple residences	<u>0.62</u>	<u>0.22</u>	<u>0.17</u>
Total - Household living arrangements	1.00	1.00	1.00

NOTE

Minority-majority index (MMI) compares the proportion of English-speaking people to the proportion of French-speaking people to discern differences or similarities.

For example, a result of **1.20** indicates that by comparing the proportion of English-speaking people to the proportion of French-speaking people, the proportion of the English-speaking population is 20 percentage points higher than the proportion of French-speaking people.

To emphasize differences of 20% or higher, the values of 1.20 and above are printed in bold and the values of 0.80 and less are underlined.

Source 1: Statistics Canada, 2001 Census, special compilation for the Community Health and Social Services Network (CHSSN)

Source 2: Administrative-territorial division, Quebec Ministry of Health and Social Services

2.3 Social and economic characteristics

➤ Household living arrangements of families with an income below the low income cut-off

Data based on families with an income below the low income cut-off (the low income cut-off being determined by Statistics Canada) and based on household living arrangements (family structure) gives us an overview of the number of people in a family and the relationship between individuals within these families.

The following data categories are cross-tabulated according to 10 age groups, sex and language. However, the following tables were compiled only for the total of age groups, including the total of both sexes.

.The tables contain the following categories:

- Total – People in private households
- Total – People in census families
 - Married, common-law unions
 - Single-parent households
- Total – Non-family persons
 - Living with blood relatives
 - Living with non-relatives only
 - Living alone
- Total – Household living arrangements

**Demographic and social characteristics of the English-speaking population
in the Laval Health Region (HR13)**

Subject	:	Total English-speaking population by household living arrangements with an income below the low income cut-off
Language	:	First official language spoken (FOLS)
Sample	:	20% sample
Age groups	:	Total of age groups
Sex	:	Total (men and women)
Territories	:	Province, Laval Health Region (HR-13) and its CSSS

Household living arrangements	Province of Québec	13 - Laval HR	CSSS de Laval
Total - People in private households	209,775	10,145	10,145
Total - People in census families	143,010	8,505	8,505
Married, common-law unions	103,875	7,105	7,105
Single-parent households	39,140	1,395	1,390
Total - Non-family persons	66,760	1,640	1,640
Living with blood relatives	4,130	180	180
Living with non-relatives only	15,645	225	220
Living alone	46,985	1,230	1,230
Total - People in multiple residences	0	0	0
Total - Household living arrangements	209,775	10,145	10,145

NOTE

The English-speaking population of a geographic location can be estimated by using data according to mother tongue or first official language spoken (FOLS).

Data by mother tongue is, however, more reliable in territories where the English-speaking population is more dispersed (low-concentration zones), although the estimates are conservative.

For other regions of Quebec, such as Montreal, where the English-speaking population is more concentrated, FOLS data provides a more precise estimate. Because the total number is higher at the provincial level, and the English-speaking population is more concentrated in certain areas, FOLS data is more accurate than mother tongue data for estimating the English-speaking population. However, in all cases, data by both mother tongue and FOLS may underestimate the population.

Thus, in this table, the number corresponding to the region is a good estimate of actual numbers. The number for the province is a much more accurate representation of the total number of English-speaking people in the province than mother tongue.

Furthermore, the tables based on FOLS present important social and economic data, cross tabulated by age groups or other characteristics of the data.

Some data is rounded off to the nearest 0 or 5 people, and certain data suppression rules are applied in order to protect individual confidentiality. Thus the total sum of a series of data may differ slightly from the sum.

Source 1: Statistics Canada, 2001 Census, special compilation for the Community Health and Social Services Network (CHSSN)

Source 2: Administrative-territorial division, Quebec Ministry of Health and Social Service

**Demographic and social characteristics of the English-speaking population
in the Laval Health Region (HR13)**

Subject	:	English-speaking population as a percentage of the total English population by household living arrangements with an income below the low income cut-off
Language	:	First official language spoken (FOLS)
Sample	:	20% sample
Age groups	:	Total of age groups
Sex	:	Total (men and women)
Territories	:	Province, Laval Health Region (HR-13) and its CSSS

Household living arrangements	Province of Québec	13 - Laval HR	CSSS de Laval
Total - People in private households	100.0%	100.0%	100.0%
Total - People in census families	68.2%	83.8%	83.8%
Married, common-law unions	49.5%	70.0%	70.0%
Single-parent households	18.7%	13.8%	13.7%
Total - Non-family persons	31.8%	16.2%	16.2%
Living with blood relatives	2.0%	1.8%	1.8%
Living with non-relatives only	7.5%	2.2%	2.2%
Living alone	22.4%	12.1%	12.1%
Total - People in multiple residences	0.0%	0.0%	0.0%
Total - Household living arrangements	100.0%	100.0%	100.0%

NOTE

The English-speaking population as a percentage of the total English population is used to express the weight of English-speaking people from a specific household living arrangement category below the low income cut-off within their own overall linguistic population. To calculate the percentage we have divided the number of English-speaking people from one household living arrangement category below the low income cut-off by the total population of English-speakers.

For example, an 11.9% result for the "Single-parent household" category in a HR means that English-speaking people living in single-parent households represent 11.9% of the total English-speaking population in the HR. A 19.4% result for the "Single-parent household" category in a CSSS means that English-speaking people living in single-parent households represent 19.4% of the English-speaking population in a CSSS.

Source 1: Statistics Canada, 2001 Census, special compilation for the Community Health and Social Services Network (CHSSN)

Source 2: Administrative-territorial division, Quebec Ministry of Health and Social Services

**Demographic and social characteristics of the English-speaking population
in the Laval Health Region (HR13)**

Subject	:	English-speaking population as a percentage of the total population by household living arrangements with an income below the low income cut-off
Language	:	First official language spoken (FOLS)
Sample	:	20% sample
Age groups	:	Total of age groups
Sex	:	Total (men and women)
Territories	:	Province, Laval Health Region (HR-13) and its CSSS

Household living arrangements	Province of Québec	13 - Laval HR	CSSS de Laval
Total - People in private households	15.6%	18.7%	18.7%
Total - People in census families	16.8%	22.3%	22.3%
Married, common-law unions	18.3%	26.2%	26.2%
Single-parent households	13.8%	12.8%	12.7%
Total - Non-family persons	13.5%	10.2%	10.2%
Living with blood relatives	18.8%	24.2%	24.2%
Living with non-relatives only	14.9%	8.0%	7.8%
Living alone	12.8%	9.8%	9.8%
Total - People in multiple residences	0.0%	0.0%	0.0%
Total - Household living arrangements	15.6%	18.7%	18.7%

NOTE

To show the weight of English-speaking people from a specific category of household living arrangements with an income below the low income cut-off within their own overall linguistic population, we express the English-speaking population as a percentage of the total population. To calculate the percentage we have divided the number of English-speaking people from one specific category of household living arrangements below the low income cut-off by the total population of English-speaking people.

For example, a 27.8% result for the "Single-parent household" category in a HR means that English-speaking people living in single-parent households represent 27.8% of the total population living in single-parent households in the HR. A 61.9% result for the "Single-parent household" category in a CSSS means that English-speaking people living in single-parent households represent 61.9% of the total population living in single-parent households in a CSSS.

Source 1: Statistics Canada, 2001 Census, special compilation for the Community Health and Social Services Network (CHSSN)

Source 2: Administrative-territorial division, Quebec Ministry of Health and Social Services

**Demographic and social characteristics of the English-speaking population
in the Laval Health Region (HR13)**

Subject : **Provincial relative geographic index of the English-speaking population by household living arrangements with an income below the low income cut-off**

Language : First official language spoken (FOLS)

Sample : 20% sample

Age groups : Total of age groups

Sex : Total (men and women)

Territories : **Province, Laval Health Region (HR-13) and its CSSS**

Household living arrangements	Province of Québec	13 - Laval HR	CSSS de Laval
Total - People in private households	1.00	1.00	1.00
Total - People in census families	1.00	1.23	1.23
Married, common-law unions	1.00	1.41	1.41
Single-parent households	1.00	<u>0.74</u>	<u>0.73</u>
Total - Non-family persons	1.00	<u>0.51</u>	<u>0.51</u>
Living with blood relatives	1.00	0.90	0.90
Living with non-relatives only	1.00	<u>0.30</u>	<u>0.29</u>
Living alone	1.00	<u>0.54</u>	<u>0.54</u>
Total - People in multiple residences			
Total - Household living arrangements	1.00	1.00	1.00

NOTE

Provincial relative geographic index (PR_RGI) compares the proportion (percentage) of a group of English-speaking people within a smaller territory (HR or CSSS) to the population in a larger territory (province). This index shows the geographic variation of the concentration of English-speaking people in the region in relation to the provincial average.

For example, a result of **1.39** shows that by comparing the proportion of English-speaking people in the CSSS area to the proportion of English-speaking people in the province, the proportion of the English-speaking population is 39 percentage points higher in the CSSS than the proportion of English-speaking people in the province.

To emphasize differences of 20% or higher, the values of 1.20 and above are printed in bold and the values of 0.80 and less are underlined.

Source 1: Statistics Canada, 2001 Census, special compilation for the Community Health and Social Services Network (CHSSN)
Source 2: Administrative-territorial division, Quebec Ministry of Health and Social Services

**Demographic and social characteristics of the English-speaking population
in the Laval Health Region (HR13)**

Subject : **Regional relative geographic index of the English-speaking population by household living arrangements with an income below the low income cut-off**

Language : First official language spoken (FOLS)

Sample : 20% sample

Age groups : Total of age groups

Sex : Total (men and women)

Territories : **Province, Laval Health Region (HR-13) and its CSSS**

Household living arrangements	Province of Québec	13 - Laval HR	CSSS de Laval
Total - People in private households		1.00	1.00
Total - People in census families		1.00	1.00
Married, common-law unions		1.00	1.00
Single-parent households		1.00	1.00
Total - Non-family persons		1.00	1.00
Living with blood relatives		1.00	1.00
Living with non-relatives only		1.00	0.98
Living alone		1.00	1.00
Total - People in multiple residences			
Total - Household living arrangements		1.00	1.00

NOTE

Regional relative geographic index (HR_RGI) compares the proportion (percentage) of a group of English-speaking people within a smaller territory (CSSS) to the population in a larger territory (HR). This index shows the geographic variation of the concentration of English-speaking people in the region in relation to the provincial average.

For example, a result of **1.45** shows that by comparing the proportion of English-speaking people in the CSSS area to the proportion of English-speaking people in the HR, the proportion of the English-speaking population is 45 percentage points higher in the CSSS than the proportion of English-speaking people in the HR.

To emphasize differences of 20% or higher, the values of 1.20 and above are printed in bold and the values of 0.80 and less are underlined.

Source 1: Statistics Canada, 2001 Census, special compilation for the Community Health and Social Services Network (CHSSN)
Source 2: Administrative-territorial division, Quebec Ministry of Health and Social Services

**Demographic and social characteristics of the English-speaking population
in the Laval Health Region (HR13)**

Subject : **Minority-majority index
by household living arrangements
with an income below the low income cut-off**

Language : First official language spoken (FOLS)

Sample : 20% sample

Age groups : Total of age groups

Sex : Total (men and women)

Territories : **Province, Laval Health Region (HR-13) and its CSSS**

Household living arrangements	Province of Québec	13 - Laval HR	CSSS de Laval
Total - People in private households	1.00	1.00	1.00
Total - People in census families	1.10	1.25	1.26
Married, common-law unions	1.23	1.57	1.57
Single-parent households	0.86	<u>0.62</u>	<u>0.62</u>
Total - Non-family persons	0.84	<u>0.49</u>	<u>0.49</u>
Living with blood relatives	1.30	1.61	1.59
Living with non-relatives only	0.93	<u>0.37</u>	<u>0.36</u>
Living alone	<u>0.78</u>	<u>0.46</u>	<u>0.46</u>
Total - People in multiple residences			
Total - Household living arrangements	1.00	1.00	1.00

NOTE

Minority-majority index (MMI) compares the proportion of English-speaking people to the proportion of French-speaking people to discern differences or similarities.

For example, a result of **1.20** indicates that by comparing the proportion of English-speaking people to the proportion of French-speaking people, the proportion of the English-speaking population is 20 percentage points higher than the proportion of French-speaking people.

To emphasize differences of 20% or higher, the values of 1.20 and above are printed in bold and the values of 0.80 and less are underlined.

Source 1: Statistics Canada, 2001 Census, special compilation for the Community Health and Social Services Network (CHSSN)

Source 2: Administrative-territorial division, Quebec Ministry of Health and Social Services

APPENDIX 1

Definitions related to language in the 2001 Census, according to Statistics Canada

- Mother tongue
- Knowledge of official languages
- Home language
- First official language spoken

(From the Statistics Canada Web site)

<http://www12.statcan.ca/english/census01/home/Index.cfm> or

<http://www12.statcan.ca/english/census01/Products/Reference/dict/poptoc.htm>

Definitions related to language in the 2001 Census

⇒ Mother tongue

(Text taken from the Census dictionary, Statistics Canada Web Site),

Language: Mother Tongue

Part A – Plain Language Definition

Not applicable

Part B – Detailed Definition

Refers to the first language learned at home in childhood and still understood by the individual at the time of the census.

Censuses: 2001, 1996, 1991, 1986, 1981, 1976, 1971

Reported for: Total population

Question Nos.: Direct variable: Question 7 of the short form and Question 16 of the long form

Responses: See [Figures 9](#), [9A](#), [9B](#) and [9C](#).

Remarks: Mother tongue is the only language question asked of the entire population. On the long form, four language questions were asked consecutively of a 20% sample of the population. The question on mother tongue appeared after the questions on language knowledge and the question on home language. This is the same as in 1996 and 1991.

In the wording of the question on mother tongue, the expression "at home" was added to specify the context in which the individual learned the language. Only the two official languages, English and French, appear on the questionnaire. Other languages could be written in the space provided. This is the same as in 1996 and 1991. In previous censuses, the most frequently occurring non-official languages were listed on the questionnaire.

In 1996 and 2001, only the occurrence of a write-in response, and not the specific languages, was captured from the short form. Detailed information about mother tongue will still be provided for the 20% sample population who received the long form.

To facilitate the task of respondents, an instruction which appeared in the *1986 Census Guide* was added to the questionnaire in 1991, where it remained in 1996 and 2001. The instruction reads as follows: "If this person no longer understands the first language learned, indicate the second language learned."

Furthermore, the following instructions were provided to respondents in the *2001 Census Guide*:

For a person who learned two languages at the same time in early childhood, report the language this person spoke most often **at home** before starting school. Report two languages only if they were used equally often and are still understood by this person.

For a child who has not yet learned to speak:

- report the language spoken most often to this child at home. Report two languages only if both languages are spoken equally often so that the child learns both languages at the same time.

On the French version of all census forms, for all questions in the language module where there is a choice of response available, the order in which the choices appear was modified since 1996 in order to give precedence to the category "French". The questions on knowledge of official languages and non-official languages also reflect this change in the actual wording of the question(s).

Definitions related to language in the 2001 Census

⇒ Knowledge of official languages

(Text taken from the Census dictionary, Statistics Canada Web Site),

Modified on June 2, 2004

Part A – Plain Language Definition

Not applicable

Part B – Detailed Definition

Refers to the ability to conduct a conversation in English only, in French only, in both English and French, or in neither of the official languages of Canada.

Censuses: 2001 (1/5 sample), 1996 (1/5 sample), 1991 (1/5 sample), 1986 (1/5 sample), 1981 (1/5 sample), 1971 (1/3 sample)

Reported for: Total population, excluding institutional residents

Question No.: Direct variable: Question 13

Responses: English only; French only; Both English and French; Neither English nor French

Remarks: The official language data are based on the respondent's assessment of his or her ability to speak the two official languages. The word "bilingualism" is often used in census documents to express both English and French data.

This is the same question as in 1996 and 1991.

In 2001, the following instructions were provided to respondents in the *2001 Census Guide*:

Mark **English** or **French** only if the person can carry on a conversation of some length on various topics in that language.

For a child who has not yet learned to speak:

- report the language(s) that the child is learning to speak at home: English, French, both, or neither.

On the French version of all census forms, for all questions in the language module where there is a choice of response available, the order in which the choices appear was modified since 1996 in order to give precedence to the category "French". The questions on knowledge of official languages and non-official languages also reflect this change in the actual wording of the question(s).

Definitions related to language in the 2001 Census

⇒ Home language

*(Text taken from the Census dictionary, Statistics Canada Web Site),
Modified on April 22, 2003*

Part A – Plain Language Definition - Not applicable

Part B – Detailed Definition

Refers to the language spoken most often or on a regular basis at home by the individual at the time of the census.

Censuses: 2001 (1/5 sample), 1996 (1/5 sample), 1991 (1/5 sample), 1986 (1/5 sample), 1981 (1/5 sample), 1971 (1/3 sample)

Reported for: Total population, excluding institutional residents

Question No.: Direct variable: Question 15

Responses: See [Figures 9](#), [9A](#), [9B](#) and [9C](#).

Remarks: This question has been changed since 1996. Until that census, the question asked for the language spoken most often at home, and this remains as part (a) in 2001; another part (part [b]) on languages spoken on a regular basis at home was added in 2001. This was done in order to reflect the complete linguistic situation of some Canadian households.

In 2001, the following instructions were provided to respondents in the *2001 Census Guide*:

Part a)

Report the language spoken **most often** at home. Report more than one language only if all languages are spoken equally often.

For a person who lives alone:

- report the language in which you feel most comfortable.

For a child who has not yet learned to speak:

- report the language spoken most often to this child at home. If two languages are spoken, report the language spoken most often. If both languages are used equally often, report both languages.

Part b)

Report any other languages that the person speaks at home on a regular basis, but not as often as the language reported in part a).

On the French version of all census forms, for all questions in the language module where there is a choice of response available, the order in which the choices appear was modified since 1996 in order to give precedence to the category "French". The questions on knowledge of official languages and non-official languages also reflect this change, in the actual wording of the question(s).

Definitions related to language in the 2001 Census

⇒ First official language spoken

(Text taken from the Census dictionary, Statistics Canada Web Site)

Part A – Plain Language Definition

Not applicable

Part B – Detailed Definition

Refers to a variable specified within the framework of the *Official Languages Act*.

Censuses: 2001 (1/5 sample), 1996 (1/5 sample), 1991 (1/5 sample), 1986 (1/5 sample)

Reported for: Total population, excluding institutional residents

Question Nos.: Derived variable: Questions 13, 15 and 16

Responses: Not applicable

Remarks: This variable was derived within the framework of the application of the *Official Languages Act*.

This derivation method is described in the regulations concerning the use of official languages for the provision of public services. It takes into account first the knowledge of the two official languages, second the mother tongue, and third the home language.

People who can conduct a conversation in French only are assigned French as their first official language spoken. People who can carry on a conversation in English only are assigned English as their first official language spoken. The responses to questions on mother tongue and home language are subsequently used to establish the first official language spoken by people who speak both English and French, or who cannot speak either of the two official languages. The French category includes people who have French only or French and at least one non-official language as their mother tongue. People who have English only or English and at least one non-official language as their mother tongue are included in the English category. For cases that have not yet been classified, people are assigned to the French category when they speak French only or French and at least one non-official language as their home language. The procedure is the same for English. Thus, the population is classified into two principal categories: English or French. It is necessary to add two residual categories for people who cannot be classified in accordance with the information available: English and French and neither English nor French.

Please consult the following documents for more information: *Regulations Respecting Communications With and Services to the Public in Either Official Language*, registered on December 16, 1991, in accordance with section 85 of the *Official Languages Act*, R.S.C., c. 32 (4th suppl.) and [Population Estimates by First Official Language Spoken, 1991, Catalogue No. 94-320](#), Demography Division, Statistics Canada.

APPENDIX 2

Classification of HR and CSSS in Quebec according to linguistic indicator, 2001 Census

Remarks

The list below classifies Health Regions (HR) and Health and social services centres (CSSS) according to the linguistic indicator (mother tongue or first official language spoken) that most accurately represents its English-speaking population. However, it is possible that the English-speaking population in a given region (HR) is more accurately represented by FOLS, but that one or more of its CSSS are represented more accurately by mother tongue.

Method: We have compared the English-speaking populations, adjusted for multiple responses, in all the HR and CSSS in Quebec. We then calculated the difference between FOLS English-speaking populations and English mother tongue (MT) populations. If the FOLS English-speaking population within a given HR or CSSS is lower than the English mother tongue population, we know that the estimate by FOLS is less accurate; in this case, we use the estimate by mother tongue, since by definition the FOLS cannot be lower than mother tongue (see Appendix 1). Therefore, when the difference between FOLS and mother tongue is negative, we suggest the mother tongue be used to estimate the English-speaking population.

Abbreviations

PR=	Province of Quebec
HR=	Health Region
CSSS =	health and social services centre (Centres de santé et des services sociaux)
MT-English=	Mother tongue - English (100%)
FOLS-English=	First official language spoken - English (20%)

Classification of HR according to linguistic indicator

Geographic territory	Mother tongue (MT) 2001	First official language spoken (FOLS) 2001	FOLS-MT	Best indicator
Province of Quebec	651 905	918 955	267 050	FOLS
01 - BAS-SAINT-LAURENT HR	1 240	820	-420	MT
CSSS DE RIMOUSKI-NEIGETTE	390	310	-80	MT
CSSS DE LA MITIS	185	150	-35	MT
CSSS DE MATANE	130	80	-50	MT
CSSS DE LA MATAPEDIA	80	30	-50	MT
CSSS DES BASQUES	40	20	-20	MT
CSSS DE TEMISCOUATA	150	50	-100	MT
CSSS DE RIVIERE-DU-LOUP	185	110	-75	MT
CSSS DE KAMOURASKA	80	70	-10	MT
02 - SAGUENAY - LAC-SAINT-JEAN HR	2 150	1 765	-385	MT
CSSS CLEOPHAS-CLAVEAU	360	245	-115	MT
CSSS DE CHICOUTIMI	555	530	-25	MT
CSSS DE JONQUIERE	650	570	-80	MT
CSSS DOMAINE-DU-ROY	145	130	-15	MT
CSSS MARIA-CHAPDELAIN	125	55	-70	MT
CSSS DE LAC-SAINT-JEAN-EST	315	235	-80	MT

**Demographic and social characteristics of the English-speaking population
in the Laval Health Region (HR13)**

Geographic territory	Mother tongue (MT) 2001	First official language spoken (FOLS) 2001	FOLS-MT	Best indicator
03 - Capitale-Nationale HR	12 040	11 065	-975	MT
CSSS DE PORTNEUF	510	370	-140	MT
CSSS DE LA VIEILLE-CAPITALE	6 565	6 540	-25	MT
CSSS DE QUEBEC-NORD	4 775	4 045	-730	MT
CSSS DE CHARLEVOIX	190	110	-80	MT
04 - MAURICIE AND CENTRE-DU-QUÉBEC HR	5 615	4 885	-730	MT
CSSS DU HAUT-SAINT-AURICE	270	250	-20	MT
CSSS DE LA VALLEE-DE-LA-BATISCAN	155	120	-35	MT
CSSS DE L'ENERGIE	770	650	-120	MT
CSSS DE MASKINONGE	240	140	-100	MT
CSSS DE TROIS-RIVIERES	1 735	1 600	-135	MT
CSSS DE BECANCOUR - NICOLET-YAMASKA	370	280	-90	MT
CSSS DRUMMOND	1 385	1 190	-195	MT
CSSS D'ARTHABASKA-ERABLE	690	655	-35	MT
05 – ESTRIE HR	22 950	23 390	440	FOLS
CSSS DU GRANIT	285	275	-10	MT
CSSS DES SOURCES	585	510	-75	MT
CSSS DU HAUT-SAINT-FRANCOIS	2 690	2 605	-85	MT
CSSS DU VAL-SAINT-FRANCOIS	2 550	2 375	-175	MT
CSSS DE LA MRC-DE-COATICOOK	1 970	1 880	-90	MT
CSSS DE MEMPHREMAGOG	7 830	8 495	665	FOLS
CSSS- INSTITUT UNIVERSITAIRE DE GERIATRIE DE SHERBROOKE	7 040	7 245	205	FOLS
06 - MONTRÉAL HR	356 155	563 940	207 785	FOLS
CSSS DE L'OUEST-DE-L'ILE	94 150	123 740	29 590	FOLS
CSSS DE DORVAL-LACHINE-LASALLE	40 845	53 570	12 725	FOLS
CSSS DU SUD-OUEST-VERDUN	24 815	32 680	7 865	FOLS
CSSS DE LA POINTE-DE-L'ILE	11 335	22 655	11 320	FOLS
CSSS LUCILLE-TEASDALE	8 005	13 910	5 905	FOLS
CSSS DE SAINT-LEONARD ET SAINT-MICHEL	10 815	30 005	19 190	FOLS
CSSS DE LA MONTAGNE	58 825	110 385	51 560	FOLS
CSSS CAVENDISH	56 695	77 470	20 775	FOLS
CSSS JEANNE-MANCE	14 130	20 850	6 720	FOLS
CSSS DE BORDEAUX-CARTIERVILLE-SAINT-LAURENT	21 990	47 570	25 580	FOLS
CSSS DU COEUR-DE-L'ILE	5 375	11 145	5 770	FOLS
CSSS D'AHUNTSIC ET MONTREAL-NORD	9 175	19 935	10 760	FOLS
07 – OUTAOUAIS HR	50 015	53 945	3 930	FOLS
CSSS DE GATINEAU	26 005	29 080	3 075	FOLS
CSSS DU PONTIAC	10 605	10 745	140	FOLS
CSSS DES COLLINES	6 700	7 360	660	FOLS
CSSS DE LA VALLEE-DE-LA-GATINEAU	2 820	3 010	190	FOLS
CSSS DE PAPINEAU	3 885	3 755	-130	MT

**Demographic and social characteristics of the English-speaking population
in the Laval Health Region (HR13)**

Geographic territory	Mother tongue (MT) 2001	First official language spoken (FOLS) 2001	FOLS-MT	Best indicator
08 - ABITIBI-TÉMISCAMINGUE HR	5 430	5 315	-115	MT
CSSS DE TEMISCAMING-ET-DE-KIPAWA	1 285	1 290	5	FOLS
CSSS DU LAC-TEMISCAMINGUE	1 025	1 080	55	FOLS
CSSS DE ROUYN-NORANDA	1 200	1 090	-110	MT
CSSS DES AURES-BOREALES	180	90	-90	MT
CSSS LES ESKERS DE L'ABITIBI	290	275	-15	MT
CSSS DE LA VALLEE-DE-L'OR	1 450	1 490	40	FOLS
09 - RSS CÔTE-NORD	5 145	5 740	595	FOLS
CSSS DE LA HAUTE-COTE-NORD	45	45	0	MT
CSSS DE MANICOUAGAN	330	340	10	FOLS
CSSS DE PORT-CARTIER	190	125	-65	MT
CSSS DE SEPT-ILES	935	1 010	75	FOLS
CSSS DE L'HEMATITE	80	175	95	FOLS
CSSS DE LA MINGANIE	50	80	30	FOLS
CSSS DE LA BASSE-COTE-NORD	3 505	3 560	55	FOLS
CLSC NASKAPI	10	410	400	FOLS
10 - NORD-DU-QUÉBEC HR	285	310	25	FOLS
10101 - CHIBOUGAMAU/CHAPAIS	170	170	0	MT
10102 - LEBEL-SUR-QUÉVILLON	35	35	0	MT
10103 - MATAGAMI	55	80	25	FOLS
10104 - BAIE-JAMES	25	20	-5	MT
11 - GASPÉSIE-ÎLES-DE-LA-MADELEINE HR	9 420	9 740	320	FOLS
CSSS DE LA BAIE-DES-CHALEURS	4 990	5 670	680	FOLS
CSSS DU ROCHER-PERCE	920	840	-80	MT
CSSS DE LA COTE-DE-GASPE	2 630	2 495	-135	MT
CSSS DES ILES	805	710	-95	MT
CSSS DE LA HAUTE-GASPESIE	75	30	-45	MT
12 - CHAUDIÈRE-APPALACHES HR	3 710	2 685	-1 025	MT
CSSS DES ETCHEMINS	115	65	-50	MT
CSSS DU GRAND LITTORAL	2 215	1 685	-530	MT
CSSS DE BEAUCE	545	360	-185	MT
CSSS DE LA REGION DE THETFORD	635	470	-165	MT
CSSS DE MONTMAGNY-L'ISLET	200	105	-95	MT
13 – LAVAL HR	27 455	53 385	25 930	FOLS
CSSS DE LAVAL	27 455	53 390	25 935	FOLS
14 – LANAUDIÈRE HR	8 930	8 215	-715	MT
CSSS DU NORD DE LANAUDIÈRE	4 165	3 780	-385	MT
CSSS DU SUD DE LANAUDIÈRE	4 765	4 435	-330	MT
15 – LAURENTIDES HR	28 785	30 565	1 780	FOLS
CSSS DU LAC-DES-DEUX-MONTAGNES	6 460	6 650	190	FOLS
CSSS DE SAINT-JEROME	2 895	2 615	-280	MT
CSSS DE THERESE-DE BLAINVILLE	7 240	8 645	1 405	FOLS
CSSS D'ANTOINE-LABELLE	550	520	-30	MT
CSSS DES PAYS-D'EN-HAUT	3 430	3 680	250	FOLS
CSSS DES SOMMETS	2 685	2 805	120	FOLS
CSSS D'ARGENTEUIL	5 525	5 645	120	FOLS

**Demographic and social characteristics of the English-speaking population
in the Laval Health Region (HR13)**

Geographic territory	Mother tongue (MT) 2001	First official language spoken (FOLS) 2001	FOLS-MT	Best indicator
16 – MONTÉRÉGIE HR	111 520	129 125	17 605	FOLS
CSSS DU HAUT-SAINT-LAURENT	7 020	7 015	-5	MT
CSSS DU SUROIT	1 860	1 770	-90	MT
CSSS JARDINS-ROUSSILLON	18 770	21 700	2 930	FOLS
CSSS CHAMPLAIN	26 980	38 200	11 220	FOLS
CSSS PIERRE-BOUCHER	6 995	8 620	1 625	FOLS
CSSS HAUT RICHELIEU / ROUVILLE	6 695	6 630	-65	MT
CSSS RICHELIEU-YAMASKA	6 800	7 400	600	FOLS
CSSS DE SOREL-TRACY	600	440	-160	MT
CSSS LA POMMERAIE	11 095	11 140	45	FOLS
CSSS DE LA HAUTE-YAMASKA	3 560	3 440	-120	MT
CSSS DE VAUDREUIL-SOULANGES	21 145	22 765	1 620	FOLS
17 – Nunavik HR	405	5 225	4 820	FOLS
17101 - Baie D'Hudson	150	2 575	2 425	FOLS
17102 - Ungava	255	2 640	2 385	FOLS
18 - Terres-Cries-de-la-Baie-James HR	685	8 850	8 165	FOLS
18101 - Territoire Cri	685	8 850	8 165	FOLS

APPENDIX 3

Comparison of the English mother tongue population 1996-2001 by HR and CSSS

Comparison of the English mother tongue population 1996-2001 by HR and CSSS

Abbreviations

PR=	Province of Quebec
HR=	Health Region
CSSS =	Centres de santé et des services sociaux (health and social services centre)
MT-English =	Mother tongue-English (100%)
Change 2001-1996=	Change in the English mother tongue population between 1996 and 2001
% Change 2001-1996=	Percentage change in the English mother tongue population between 1996 and 2001

Source: Statistics Canada, 1996, 2001 Census, special compilation for the Community Health and Social Services Network (CHSSN)

Geographic territory	MT_1996	MT_2001	Change 2001-1996	% Change 2001-1996
Province of Quebec	645 805	651 905	6 100	0.94%
01 - BAS-SAINT-LAURENT HR	1 300	1 240	-60	-4.62%
CSSS DE RIMOUSKI-NEIGETTE	395	390	-5	-1.27%
CSSS DE LA MITIS	225	185	-40	-17.78%
CSSS DE MATANE	130	130	0	0.00%
CSSS DE LA MATAPEDIA	80	80	0	0.00%
CSSS DES BASQUES	70	40	-30	-42.86%
CSSS DE TEMISCOUATA	135	150	15	11.11%
CSSS DE RIVIERE-DU-LOUP	175	185	10	5.71%
CSSS DE KAMOURASKA	90	80	-10	-11.11%
02 - SAGUENAY - LAC-SAINT-JEAN HR	2 280	2 150	-130	-5.70%
CSSS CLEOPHAS-CLAVEAU	415	360	-55	-13.25%
CSSS DE CHICOUTIMI	615	555	-60	-9.76%
CSSS DE JONQUIERE	700	650	-50	-7.14%
CSSS DOMAINE-DU-ROY	145	145	0	0.00%
CSSS MARIA-CHAPDELAINÉ	105	125	20	19.05%
CSSS DE LAC-SAINT-JEAN-EST	300	315	15	5.00%
03 - Capitale-Nationale HR	12 200	12 040	-160	-1.31%
CSSS DE PORTNEUF	505	510	5	0.99%
CSSS DE LA VIEILLE-CAPITALE	6 615	6 565	-50	-0.76%
CSSS DE QUEBEC-NORD	4 905	4 775	-130	-2.65%
CSSS DE CHARLEVOIX	175	190	15	8.57%
04 - MAURICIE AND CENTRE-DU-QUÉBEC HR	5 535	5 615	80	1.45%
CSSS DU HAUT-SAINT-AURICE	290	270	-20	-6.90%
CSSS DE LA VALLEE-DE-LA-BATISCAN	145	155	10	6.90%
CSSS DE L'ENERGIE	760	770	10	1.32%
CSSS DE MASKINONGE	165	240	75	45.45%
CSSS DE TROIS-RIVIERES	1 740	1 735	-5	-0.29%
CSSS DE BECANCOUR - NICOLET-YAMASKA	320	370	50	15.63%

**Demographic and social characteristics of the English-speaking population
in the Laval Health Region (HR13)**

Geographic territory	MT_1996	MT_2001	Change 2001-1996	% Change 2001-1996
CSSS DRUMMOND	1 360	1 385	25	1.84%
CSSS D'ARTHABASKA-ERABLE	755	690	-65	-8.61%
05 – ESTRIE HR	24 015	22 950	-1 065	-4.43%
CSSS DU GRANIT	300	285	-15	-5.00%
CSSS DES SOURCES	635	585	-50	-7.87%
CSSS DU HAUT-SAINT-FRANCOIS	2 850	2 690	-160	-5.61%
CSSS DU VAL-SAINT-FRANCOIS	2 530	2 550	20	0.79%
CSSS DE LA MRC-DE-COATICOOK	2 160	1 970	-190	-8.78%
CSSS DE MEMPHREMAGOG	8 395	7 830	-565	-6.73%
CSSS- INSTITUT UNIVERSITAIRE DE GERIATRIE DE SHERBROOKE	7 145	7 040	-105	-1.47%
06 - MONTRÉAL HR	349 295	356 155	6 860	1.96%
CSSS DE L'OUEST-DE-L'ILE	92 715	94 150	1 435	1.55%
CSSS DE DORVAL-LACHINE-LASALLE	40 680	40 845	165	0.41%
CSSS DU SUD-OUEST-VERDUN	26 535	24 815	-1 720	-6.48%
CSSS DE LA POINTE-DE-L'ILE	9 840	11 335	1 495	15.19%
CSSS LUCILLE-TEASDALE	7 560	8 005	445	5.89%
CSSS DE SAINT-LEONARD ET SAINT-MICHEL	9 365	10 815	1 450	15.48%
CSSS DE LA MONTAGNE	58 230	58 825	595	1.02%
CSSS CAVENDISH	57 750	56 695	-1 055	-1.83%
CSSS JEANNE-MANCE	12 685	14 130	1 445	11.39%
CSSS DE BORDEAUX-CARTIERVILLE-SAINT-LAURENT	20 935	21 990	1 055	5.04%
CSSS DU COEUR-DE-L'ILE	4 720	5 375	655	13.88%
CSSS D'AHUNTSIC ET MONTREAL-NORD	8 280	9 175	895	10.81%
07 – OUTAOUAIS HR	48 995	50 015	1 020	2.08%
CSSS DE GATINEAU	24 420	26 005	1 585	6.49%
CSSS DU PONTIAC	11 355	10 605	-750	-6.61%
CSSS DES COLLINES	6 510	6 700	190	2.92%
CSSS DE LA VALLEE-DE-LA-GATINEAU	2 825	2 820	-5	-0.18%
CSSS DE PAPINEAU	3 885	3 885	0	0.00%
08 - ABITIBI-TÉMISCAMINGUE HR	5 875	5 430	-445	-7.57%
CSSS DE TEMISCAMING-ET-DE-KIPAWA	1 385	1 285	-100	-7.22%
CSSS DU LAC-TEMISCAMINGUE	1 010	1 025	15	1.49%
CSSS DE ROUYN-NORANDA	1 425	1 200	-225	-15.79%
CSSS DES AUREORES-BOREALES	165	180	15	9.09%
CSSS LES ESKERS DE L'ABITIBI	275	290	15	5.45%
CSSS DE LA VALLEE-DE-L'OR	1 615	1 450	-165	-10.22%
09 - RSS CÔTE-NORD	5 630	5 145	-485	-8.61%
CSSS DE LA HAUTE-COTE-NORD	45	45	0	0.00%
CSSS DE MANICOUAGAN	375	330	-45	-12.00%
CSSS DE PORT-CARTIER	215	190	-25	-11.63%
CSSS DE SEPT-ILES	1 000	935	-65	-6.50%
CSSS DE L'HEMATITE	145	80	-65	-44.83%
CSSS DE LA MINGANIE	50	50	0	0.00%
CSSS DE LA BASSE-COTE-NORD	3 790	3 505	-285	-7.52%
CLSC NASKAPI	10	10	0	0.00%
10 - NORD-DU-QUÉBEC HR	330	285	-45	-13.64%

**Demographic and social characteristics of the English-speaking population
in the Laval Health Region (HR13)**

Geographic territory	MT_1996	MT_2001	Change 2001-1996	% Change 2001-1996
10101 - CHIBOUGAMAU/CHAPAIS	190	170	-20	-10.53%
10102 - LEBEL-SUR-QUÉVILLON	40	35	-5	-12.50%
10103 - MATAGAMI	85	55	-30	-35.29%
10104 - BAIE-JAMES	15	25	10	66.67%
11 - GASPÉSIE-ÎLES-DE-LA-MADELEINE HR	10 320	9 420	-900	-8.72%
CSSS DE LA BAIE-DES-CHALEURS	5 140	4 990	-150	-2.92%
CSSS DU ROCHER-PERCE	1 075	920	-155	-14.42%
CSSS DE LA COTE-DE-GASPE	3 195	2 630	-565	-17.68%
CSSS DES ILES	845	805	-40	-4.73%
CSSS DE LA HAUTE-GASPESIE	65	75	10	15.38%
12 - CHAUDIÈRE-APPALACHES HR	3 610	3 710	100	2.77%
CSSS DES ETCHEMINS	110	115	5	4.55%
CSSS DU GRAND LITTORAL	2 205	2 215	10	0.45%
CSSS DE BEAUCE	485	545	60	12.37%
CSSS DE LA REGION DE THETFORD	575	635	60	10.43%
CSSS DE MONTMAGNY-L'ISLET	235	200	-35	-14.89%
13 - LAVAL HR	24 580	27 455	2 875	11.70%
CSSS DE LAVAL	24 580	27 455	2 875	11.70%
14 - LANAUDIÈRE HR	8 170	8 930	760	9.30%
CSSS DU NORD DE LANAUDIÈRE	3 790	4 165	375	9.89%
CSSS DU SUD DE LANAUDIÈRE	4 380	4 765	385	8.79%
15 - LAURENTIDES HR	28 085	28 785	700	2.49%
CSSS DU LAC-DES-DEUX-MONTAGNES	6 805	6 460	-345	-5.07%
CSSS DE SAINT-JEROME	2 675	2 895	220	8.22%
CSSS DE THERESE-DE BLAINVILLE	6 125	7 240	1 115	18.20%
CSSS D'ANTOINE-LABELLE	515	550	35	6.80%
CSSS DES PAYS-D'EN-HAUT	3 480	3 430	-50	-1.44%
CSSS DES SOMMETS	2 510	2 685	175	6.97%
CSSS D'ARGENTEUIL	5 975	5 525	-450	-7.53%
16 - MONTÉRÉGIE HR	114 645	111 520	-3 125	-2.73%
CSSS DU HAUT-SAINT-LAURENT	7 220	7 020	-200	-2.77%
CSSS DU SUROIT	1 785	1 860	75	4.20%
CSSS JARDINS-ROUSSILLON	20 080	18 770	-1 310	-6.52%
CSSS CHAMPLAIN	29 315	26 980	-2 335	-7.97%
CSSS PIERRE-BOUCHER	6 640	6 995	355	5.35%
CSSS HAUT RICHELIEU / ROUVILLE	6 345	6 695	350	5.52%
CSSS RICHELIEU-YAMASKA	7 425	6 800	-625	-8.42%
CSSS DE SOREL-TRACY	545	600	55	10.09%
CSSS LA POMMERAIE	11 515	11 095	-420	-3.65%
CSSS DE LA HAUTE-YAMASKA	3 780	3 560	-220	-5.82%
CSSS DE VAUDREUIL-SOULANGES	19 995	21 145	1 150	5.75%
17 - Nunavik HR	445	405	-40	-8.99%
17101 - Baie D'Hudson	165	150	-15	-9.09%
17102 - Ungava	280	255	-25	-8.93%
18 - Terres-Cries-de-la-Baie-James HR	520	685	165	31.73%
18101 - Territoire Cri	520	685	165	31.73%

